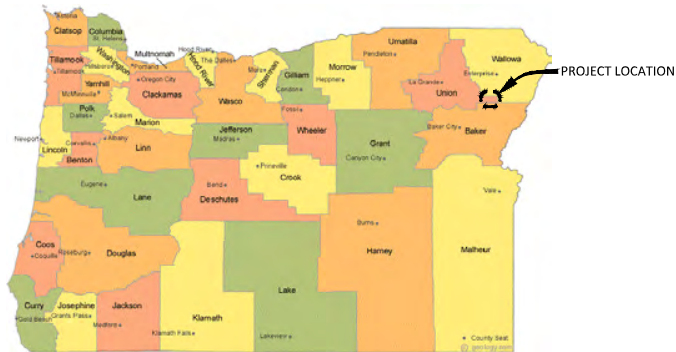


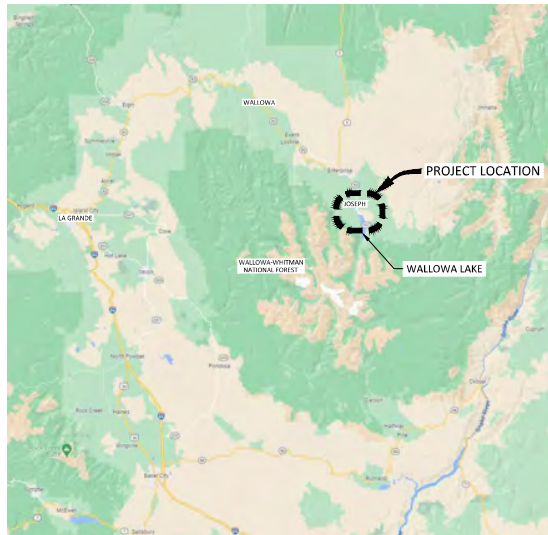
WALLOWA LAKE IRRIGATION DISTRICT

WALLOWA LAKE DAM REHABILITATION PROJECT

90% DESIGN SUBMITTAL



LOCATION MAP
NTS

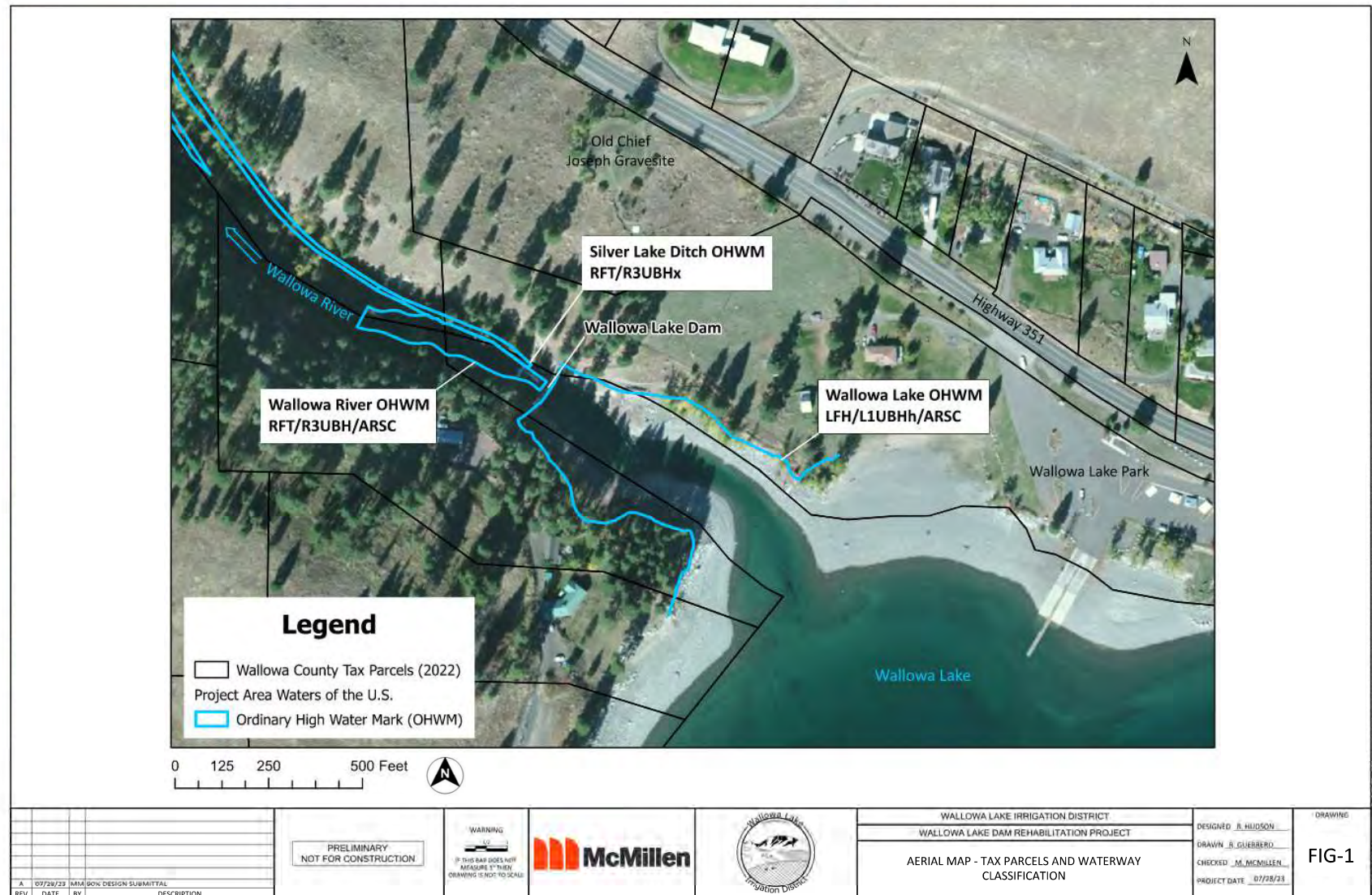


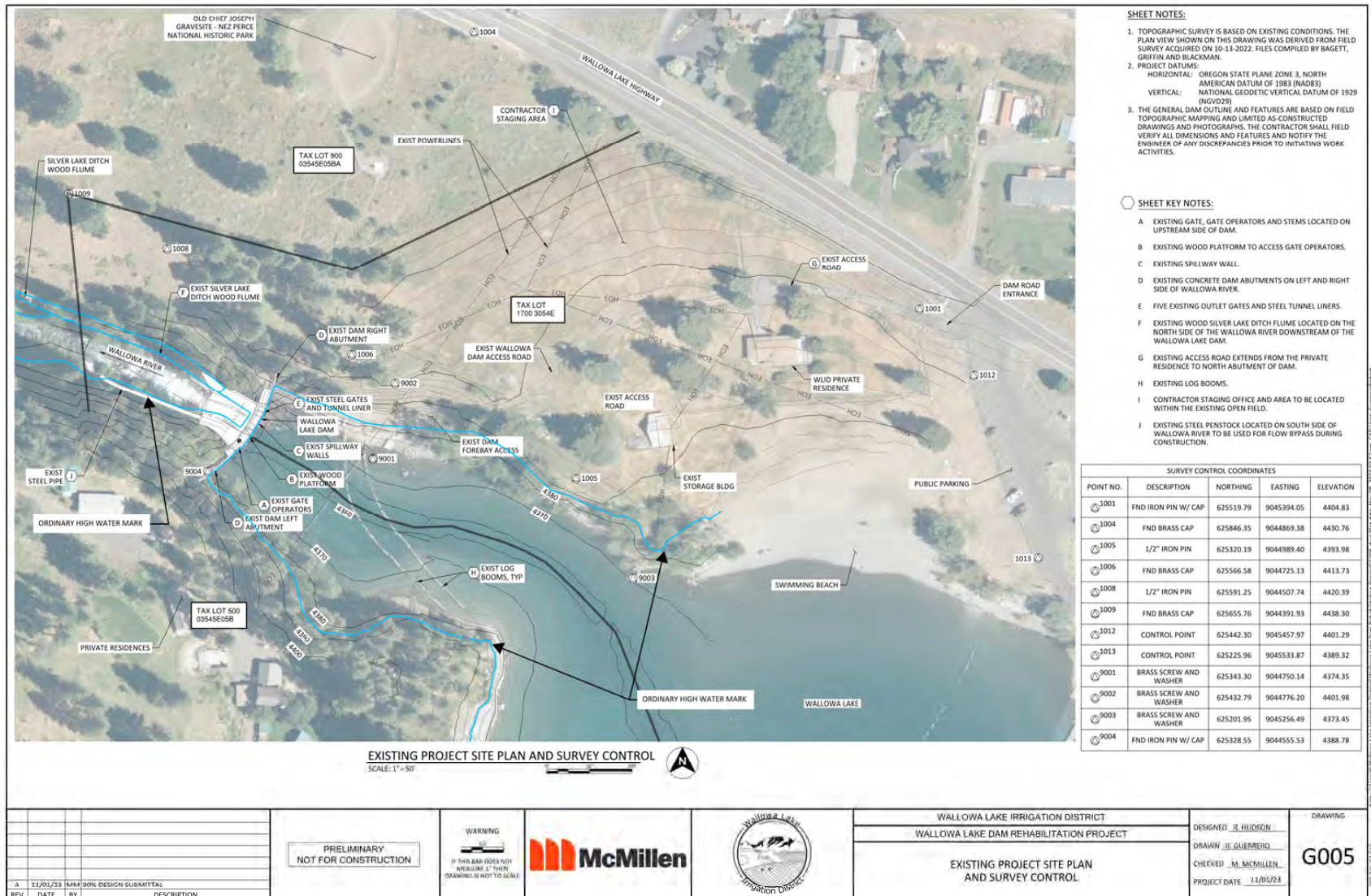
VICINITY MAP
NTS

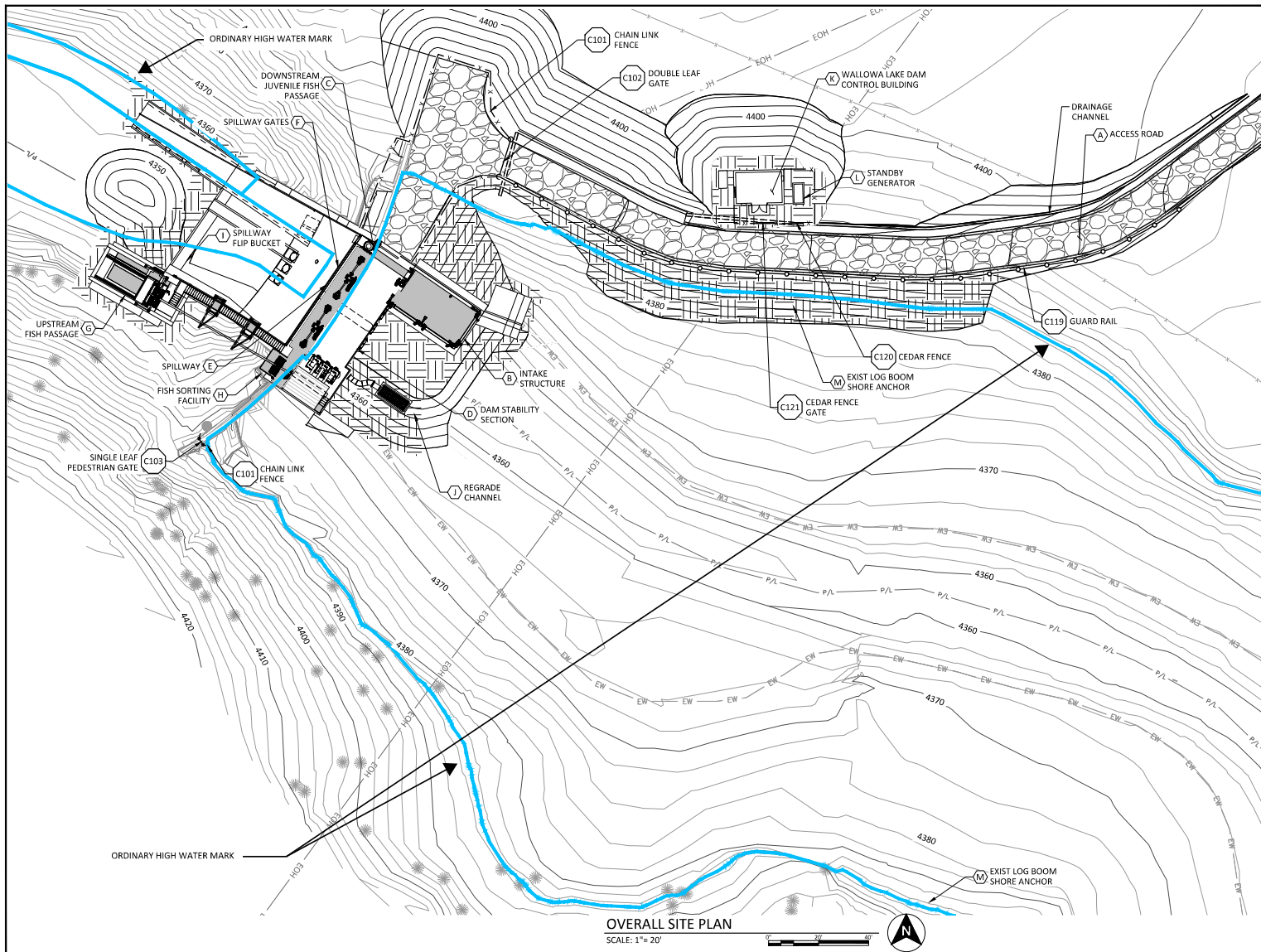


PROJECT MAP
NTS

				<div>PRELIMINARY NOT FOR CONSTRUCTION</div>	<div>WARNING  IF THIS BAR DOES NOT MEASURE 1" THEN DRAWING IS NOT TO SCALE</div>			WALLOWA LAKE IRRIGATION DISTRICT	DESIGNED <u>R. HUDSON</u>	DRAWING G001			
								WALLOWA LAKE DAM REHABILITATION PROJECT	DRAWN <u>R. GUERRERO</u>				
								LOCATION MAP, VICINITY MAP, AND PROJECT MAP	CHECKED <u>M. MCMILLEN</u>				
A	11/01/23	MM	90% DESIGN SUBMITTAL				PROJECT DATE <u>11/01/23</u>						
REV	DATE	BY	DESCRIPTION										







- SHEET KEY NOTES:**
- A INSTALL NEW GRAVEL ACCESS ROAD TO THE DAM AND TURNAROUND PAD.
 - B CONSTRUCT NEW INTAKE STRUCTURE WITH 2 SCREENED WALLS AND SCREEN CLEANING UNIT.
 - C INSTALL NEW DOWNSTREAM JUVENILE FISH PASSAGE SYSTEM, ADJUSTABLE SLUICE GATE, BYPASS PIPE, AND BYPASS PIPE PIERS.
 - D CONSTRUCT 16' WIDE REINFORCED CONCRETE DAM STABILITY SECTION ON THE BACKSIDE OF THE WALLOWA LAKE DAM.
 - E CONSTRUCT 2 NEW 20' SPILLWAY BAYS, ROUNDOUSE PIER, RESHAPE THE SPILLWAY CURVE, AND RESURFACE THE SPILLWAY.
 - F INSTALL 2 NEW 20' WIDE STEEL VERTICAL LIFT GATES, HOISTS, AND MOTORS.
 - G CONSTRUCT NEW UPSTREAM FISH COLLECTION FACILITY AND CABLE HOIST.
 - H CONSTRUCT NEW STEEL FISH SORTING PLATFORM AND FISH RETURN PIPES.
 - I CONSTRUCT NEW REINFORCED CONCRETE 2.9' FLIP BUCKET.
 - J REGRADE CHANNEL UPSTREAM OF DAM TO 4354.00.
 - K CONSTRUCT NEW WALLOWA LAKE DAM CONTROL BUILDING.
 - L CONSTRUCT NEW STANDBY GENERATOR.
 - M MAINTAIN EXISTING LOG BOOM SHORE ANCHORS AND REPLACE EXISTING LOG BOOM.

OVERALL SITE PLAN
SCALE: 1" = 20'

0' 30' 60'



REV	DATE	BY	DESCRIPTION
A	11/01/23	MM	90% DESIGN SUBMITTAL

PRELIMINARY
NOT FOR CONSTRUCTION

WARNING
IF THIS BAR DOES NOT
MEASURE 1" THEN
DRAWING IS NOT TO SCALE

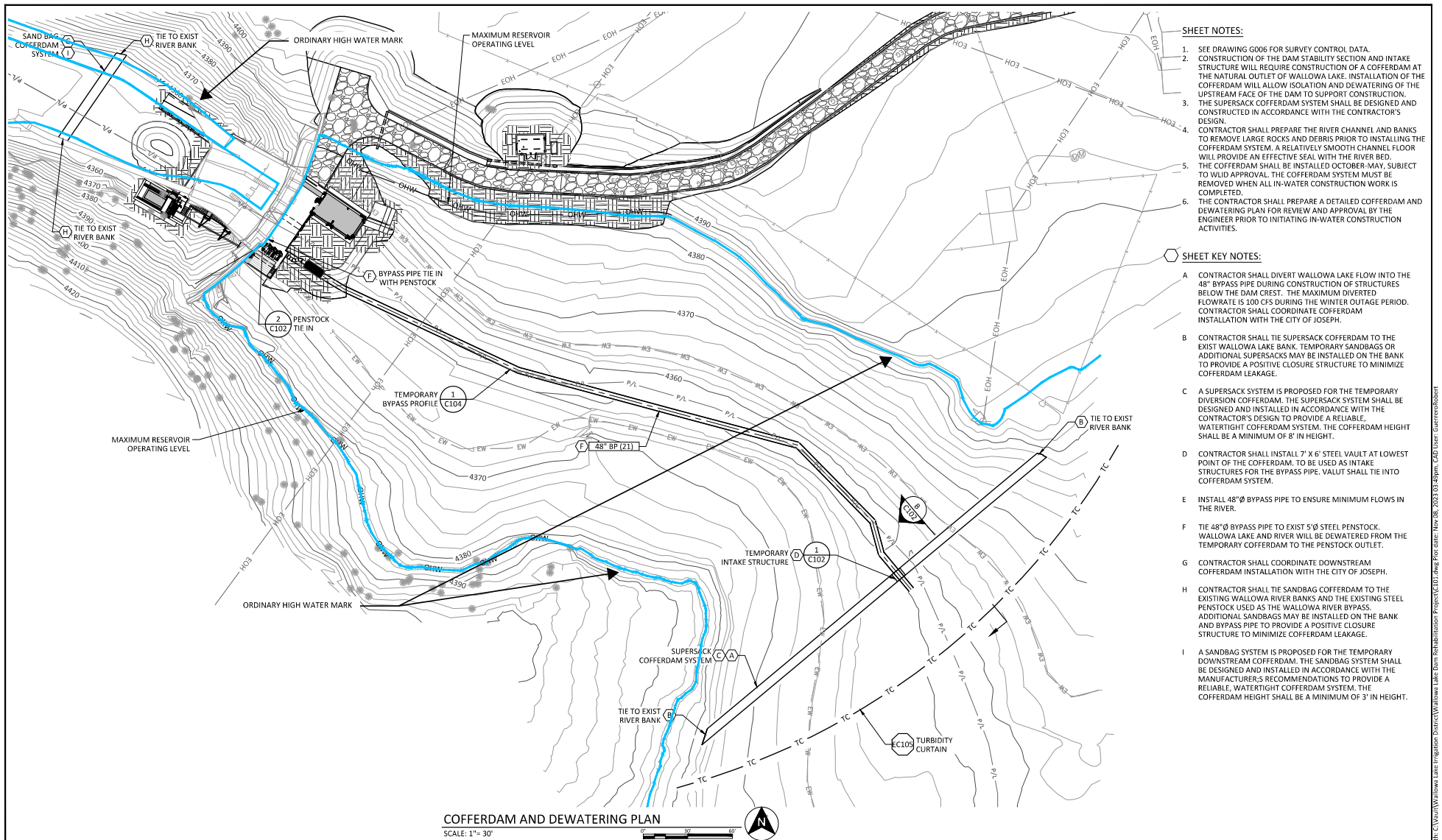


WALLOWA LAKE IRRIGATION DISTRICT
WALLOWA LAKE DAM REHABILITATION PROJECT


OVERALL SITE PLAN

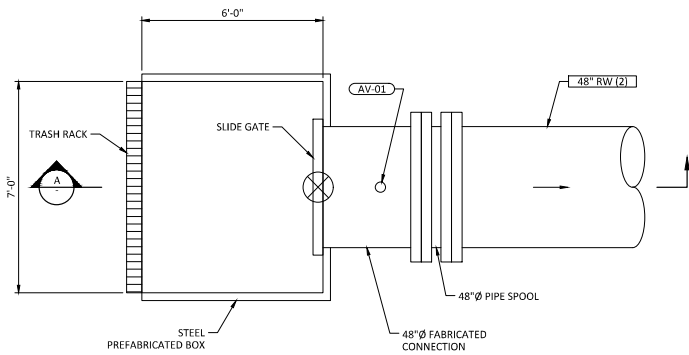
DESIGNED R. HUDSON
DRAWN R. GUERRERO
CHECKED M. McMILLEN
PROJECT DATE 11/01/23

DRAWING
C100

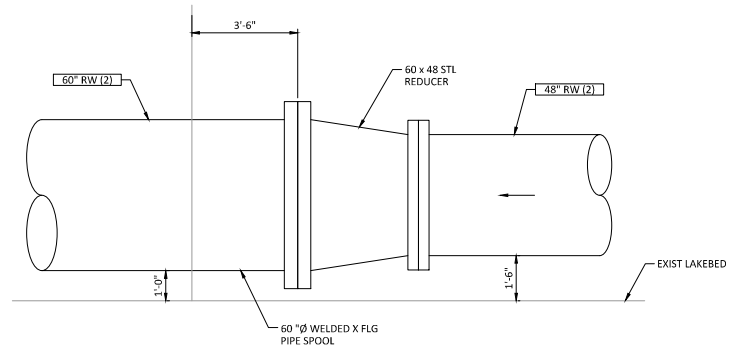


- SHEET NOTES:**
- SEE DRAWING G006 FOR SURVEY CONTROL DATA.
 - CONSTRUCTION OF THE DAM STABILITY SECTION AND INTAKE STRUCTURE WILL REQUIRE CONSTRUCTION OF A COFFERDAM AT THE NATURAL OUTLET OF WALLOWA LAKE. INSTALLATION OF THE COFFERDAM WILL ALLOW ISOLATION AND DEWATERING OF THE UPSTREAM FACE OF THE DAM TO SUPPORT CONSTRUCTION.
 - THE SUPERSACK COFFERDAM SYSTEM SHALL BE DESIGNED AND CONSTRUCTED IN ACCORDANCE WITH THE CONTRACTOR'S DESIGN.
 - CONTRACTOR SHALL PREPARE THE RIVER CHANNEL AND BANKS TO REMOVE LARGE ROCKS AND DEBRIS PRIOR TO INSTALLING THE COFFERDAM SYSTEM. A RELATIVELY SMOOTH CHANNEL FLOOR WILL PROVIDE AN EFFECTIVE SEAL WITH THE RIVER BED.
 - THE COFFERDAM SHALL BE INSTALLED OCTOBER-MAY, SUBJECT TO VALID APPROVAL. THE COFFERDAM SYSTEM MUST BE REMOVED WHEN ALL IN-WATER CONSTRUCTION WORK IS COMPLETED.
 - THE CONTRACTOR SHALL PREPARE A DETAILED COFFERDAM AND DEWATERING PLAN FOR REVIEW AND APPROVAL BY THE ENGINEER PRIOR TO INITIATING IN-WATER CONSTRUCTION ACTIVITIES.
- SHEET KEY NOTES:**
- CONTRACTOR SHALL DIVERT WALLOWA LAKE FLOW INTO THE 48" BYPASS PIPE DURING CONSTRUCTION OF STRUCTURES BELOW THE DAM CREST. THE MAXIMUM DIVERTED FLOWRATE IS 100 CFS DURING THE WINTER OUTAGE PERIOD. CONTRACTOR SHALL COORDINATE COFFERDAM INSTALLATION WITH THE CITY OF JOSEPH.
 - CONTRACTOR SHALL TIE SUPERSACK COFFERDAM TO THE EXIST WALLOWA LAKE BANK. TEMPORARY SANDBAGS OR ADDITIONAL SUPERSACKS MAY BE INSTALLED ON THE BANK TO PROVIDE A POSITIVE CLOSURE STRUCTURE TO MINIMIZE COFFERDAM LEAKAGE.
 - A SUPERSACK SYSTEM IS PROPOSED FOR THE TEMPORARY DIVERSION COFFERDAM. THE SUPERSACK SYSTEM SHALL BE DESIGNED AND INSTALLED IN ACCORDANCE WITH THE CONTRACTOR'S DESIGN TO PROVIDE A RELIABLE, WATERTIGHT COFFERDAM SYSTEM. THE COFFERDAM HEIGHT SHALL BE A MINIMUM OF 8' IN HEIGHT.
 - CONTRACTOR SHALL INSTALL 7' X 6' STEEL VAULT AT LOWEST POINT OF THE COFFERDAM. TO BE USED AS INTAKE STRUCTURES FOR THE BYPASS PIPE. VAULT SHALL TIE INTO COFFERDAM SYSTEM.
 - INSTALL 48" Ø BYPASS PIPE TO ENSURE MINIMUM FLOWS IN THE RIVER.
 - TIE 48" Ø BYPASS PIPE TO EXIST 5' Ø STEEL PENSTOCK. WALLOWA LAKE AND RIVER WILL BE DEWATERED FROM THE TEMPORARY COFFERDAM TO THE PENSTOCK OUTLET.
 - CONTRACTOR SHALL COORDINATE DOWNSTREAM COFFERDAM INSTALLATION WITH THE CITY OF JOSEPH.
 - CONTRACTOR SHALL TIE SANDBAG COFFERDAM TO THE EXISTING WALLOWA RIVER BANKS AND THE EXISTING STEEL PENSTOCK USED AS THE WALLOWA RIVER BYPASS. ADDITIONAL SANDBAGS MAY BE INSTALLED ON THE BANK AND BYPASS PIPE TO PROVIDE A POSITIVE CLOSURE STRUCTURE TO MINIMIZE COFFERDAM LEAKAGE.
 - A SANDBAG SYSTEM IS PROPOSED FOR THE TEMPORARY DOWNSTREAM COFFERDAM. THE SANDBAG SYSTEM SHALL BE DESIGNED AND INSTALLED IN ACCORDANCE WITH THE MANUFACTURER'S RECOMMENDATIONS TO PROVIDE A RELIABLE, WATERTIGHT COFFERDAM SYSTEM. THE COFFERDAM HEIGHT SHALL BE A MINIMUM OF 3' IN HEIGHT.

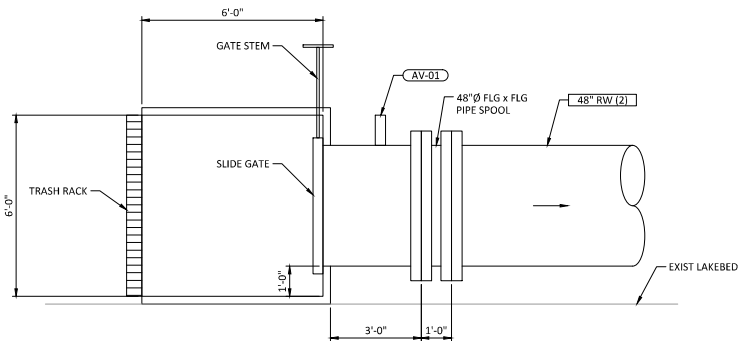
				<div>PRELIMINARY NOT FOR CONSTRUCTION</div>		<div>WARNING  IF THIS BAR DOES NOT MEASURE 1" THEN DRAWING IS NOT TO SCALE</div>		<div></div>		<div></div>		<div>WALLOWA LAKE IRRIGATION DISTRICT</div> <div>WALLOWA LAKE DAM REHABILITATION PROJECT</div> <div>COFFERDAM AND DEWATERING PLAN</div>		<div>DESIGNED <u>R. HUDSON</u></div> <div>DRAWN <u>F. HABER</u></div> <div>CHECKED <u>M. McMILLEN</u></div> <div>PROJECT DATE <u>11/01/23</u></div>		<div>DRAWING</div> <div>C101</div>	
A	11/01/23	MM	90% DESIGN SUBMITTAL														
REV	DATE	BY	DESCRIPTION														



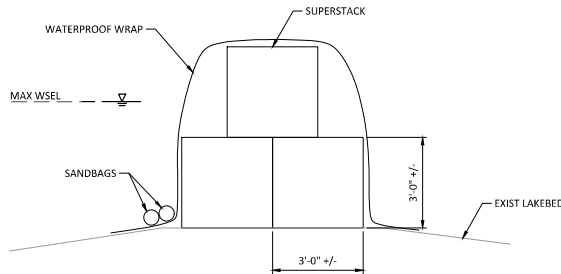
1 INTAKE STRUCTURE - PLAN
SCALE: 1/2" = 1'-0"



2 PENSTOCK TIE IN
SCALE: 1/2" = 1'-0"



A INTAKE STRUCTURE - SECTION
SCALE: 1/2" = 1'-0"



B PORTADAM - SECTION
SCALE: 1/2" = 1'-0"

NOTES:
1. ALL STRUCTURES ON THESE SHEET ARE BELOW THE WALLOWA LAKE OHHM.

REV	DATE	BY	DESCRIPTION
A	11/01/23	MM	90% DESIGN SUBMITTAL

PRELIMINARY
NOT FOR CONSTRUCTION

WARNING
IF THIS BAR DOES NOT
MEASURE 1" THEN
DRAWING IS NOT TO SCALE

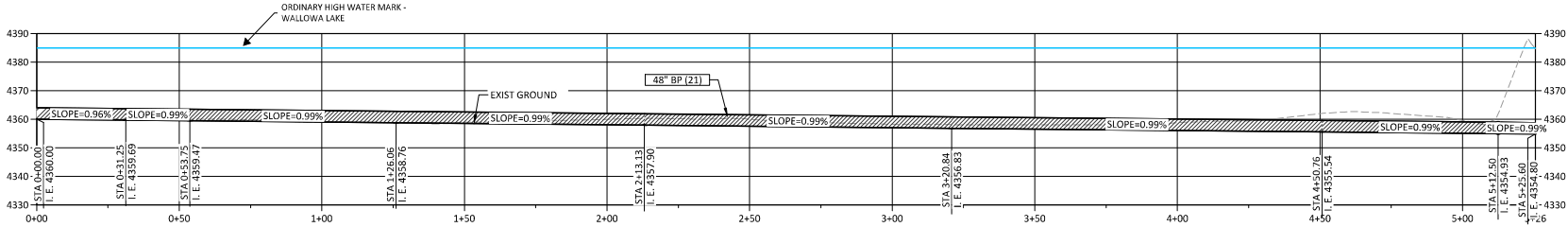


WALLOWA LAKE IRRIGATION DISTRICT
WALLOWA LAKE DAM REHABILITATION PROJECT
COFFERDAM AND DEWATERING
SECTIONS AND DETAILS

DESIGNED R. HUDSON
DRAWN F. HABER
CHECKED M. MCMILLEN
PROJECT DATE 11/01/23

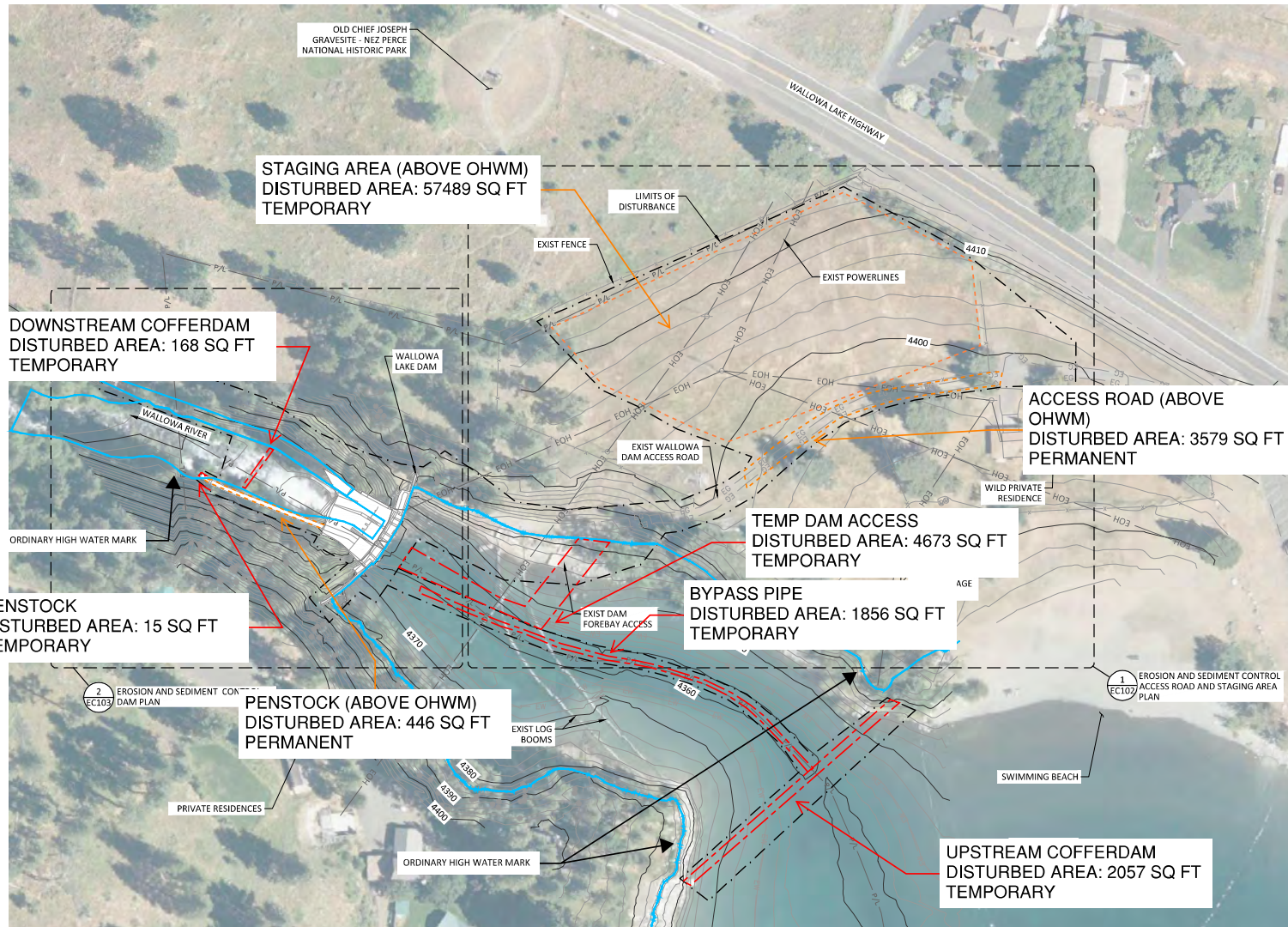
DRAWING
C102

- SHEET NOTES:
- 1. CULVERT SHALL BE CORRUGATED ON THE INTERIOR FOR ADDED ROUGHNESS FOR FISH PASSAGE.
 - 2. ALL STRUCTURES ON THIS SHEET ARE BELOW THE WALLOWA LAKE ORWM.



1
C101
TEMPORARY BYPASS PIPE PROFILE
SCALE: 1"= 20'

				<div>PRELIMINARY NOT FOR CONSTRUCTION</div>	<div>WARNING 1" = 3' IF THIS BAR DOES NOT MEASURE 1" THEN DRAWING IS NOT TO SCALE</div>	<div>McMillen</div>	<div></div>	WALLOWA LAKE IRRIGATION DISTRICT		DRAWING					
								WALLOWA LAKE DAM REHABILITATION PROJECT		DESIGNED <u>R. HUDSON</u>					
								TEMPORARY BYPASS PIPE PROFILE		DRAWN <u>F. HABER</u>					
										CHECKED <u>M. MCMILLEN</u>					
										PROJECT DATE <u>11/01/23</u>					
										C104					



EROSION AND SEDIMENT CONTROL KEY PLAN

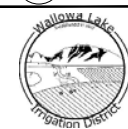
SCALE: 1"= 50'



REV	DATE	BY	DESCRIPTION
A	11/01/23	MM	90% DESIGN SUBMITTAL

PRELIMINARY
NOT FOR CONSTRUCTION

WARNING
IF THIS BAR DOES NOT
MEASURE 1" THEN
DRAWING IS NOT TO SCALE



WALLOWA LAKE IRRIGATION DISTRICT
WALLOWA LAKE DAM REHABILITATION PROJECT
EROSION AND SEDIMENT CONTROL
KEY PLAN

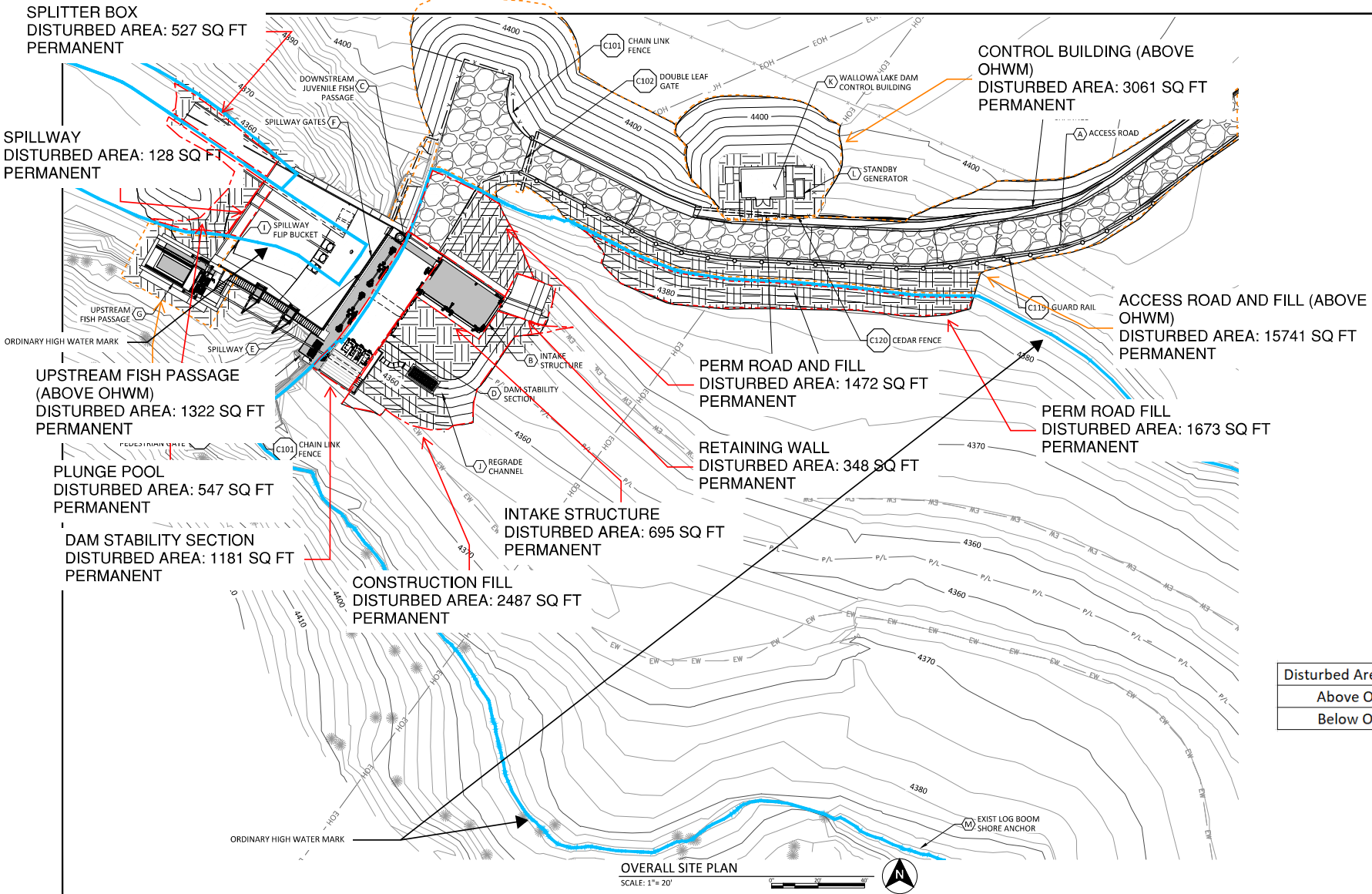
DESIGNED R. HUDSON
DRAWN R. GUERRERO
CHECKED M. McMILLEN
PROJECT DATE 11/01/23

DRAWING
EC101

SHEET NOTES:

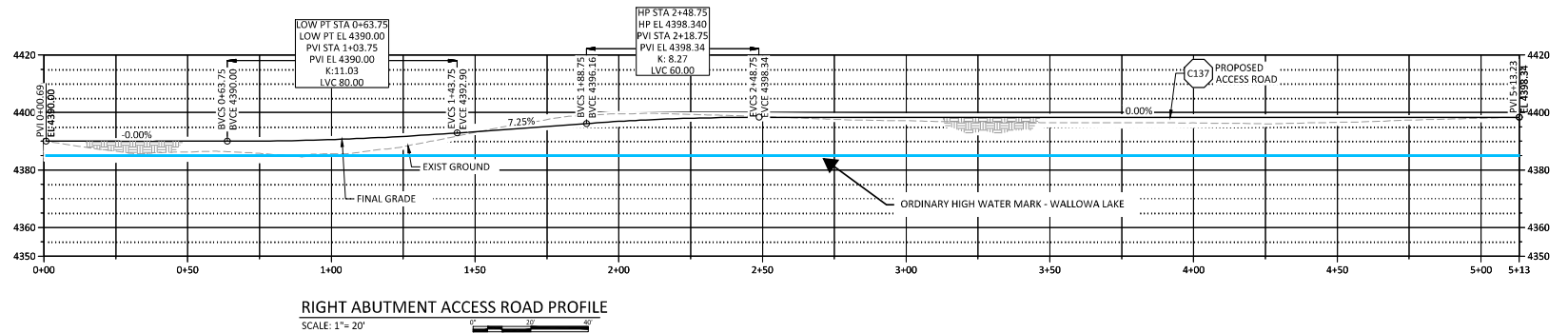
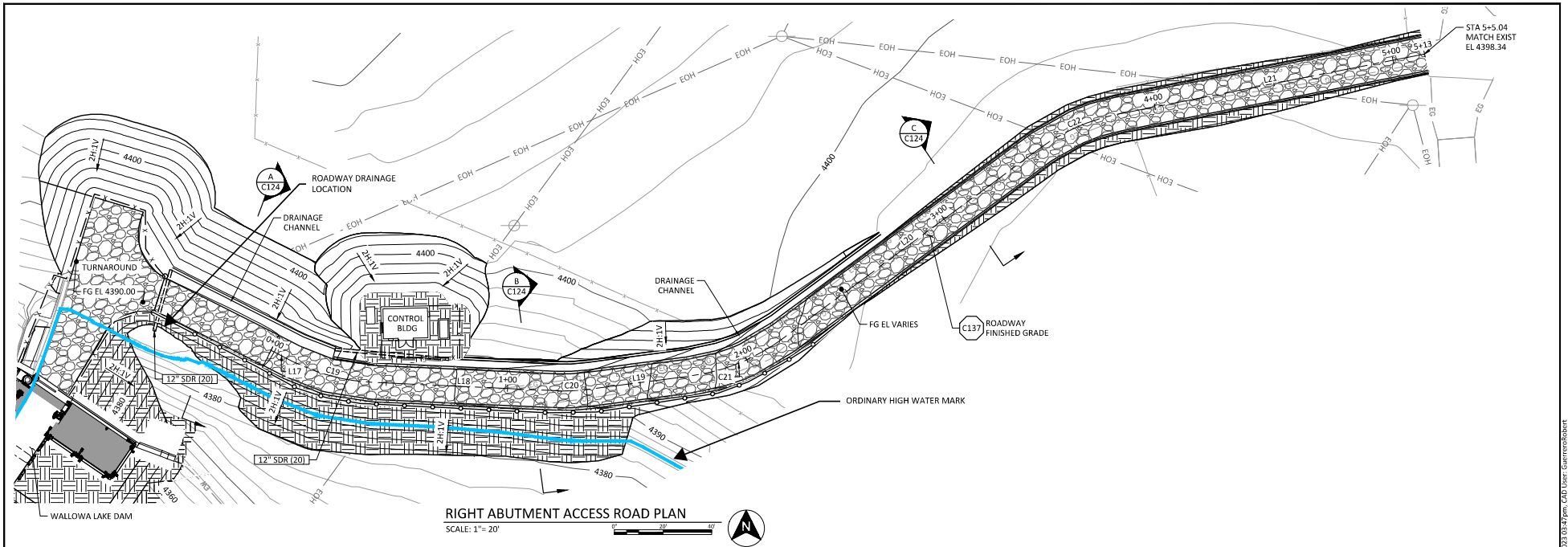
1. THE CONTRACTOR SHALL SUBMIT AN EROSION AND SEDIMENT CONTROL PLAN FOR WORK DURING CONSTRUCTION THAT MEETS ALL FEDERAL, STATE AND LOCAL REQUIREMENTS, SIGNED AND STAMPED BY A REGISTERED CIVIL ENGINEER IN THE STATE OF OREGON PRIOR TO THE START OF CONSTRUCTION.
2. THE GENERAL EROSION AND SEDIMENT CONTROL PLAN ON THIS DRAWING IS PROVIDED TO AID THE CONTRACTOR IN DEVELOPING EROSION AND SEDIMENT CONTROL PLAN ACCORDING TO CONTRACTOR SCHEDULE AND PHASING OF THE PROJECT.
3. EROSION AND SEDIMENT CONTROL MEASURES SHALL BE IN PLACE PRIOR TO INITIATING CONSTRUCTION ACTIVITIES.
4. NO GRADING OR CONSTRUCTION ACTIVITIES SHALL OCCUR OUTSIDE THE PROPOSED IMPROVEMENTS SHOWN IN THE PLANS FOR THE PROJECT.
5. MINIMIZE DISTURBANCE TO EXIST VEGETATION; UTILIZE NATURAL BUFFER STRIPS.
6. ALL SLOPES SHALL BE PROTECTED FROM EROSION DURING ROUGH GRADING OPERATIONS AND THEREAFTER, UNTIL INSTALLATION OF FINAL GROUND COVER.
7. CONTRACTOR SHALL INSTALL SILT FENCE AS INDICATED AND IN ANY ADDITIONAL LOCATIONS WHERE MATERIAL COULD LEAVE THE CONSTRUCTION SITE, AT CONTRACTOR'S EXPENSE.
8. ALL RUNOFF FROM SITE CONSTRUCTION ACTIVITIES AND FROM RAINFALL EVENTS SHALL BE RETAINED ON SITE AND FILTERED PRIOR TO DISCHARGE.
9. CONTRACTOR SHALL TAKE APPROPRIATE MEASURES TO PREVENT:
 - A. TRACKING OF MUD AND DIRT ONTO ROADS, ROAD SWEEPING IS REQUIRED IF TRACKING OCCURS.
 - B. ACCUMULATION OF CONSTRUCTION WASTE AND LITTER ON SITE.
10. STOCKPILED EXCAVATION MATERIAL SHALL BE PROTECTED FROM WATER AND WIND EROSION BY COVERING AS APPROPRIATE.
11. CONTRACTOR SHALL PROVIDE DUST ABATEMENT OVER ALL DISTURBED AREAS BY WATER SUPPLY.
12. CONTRACTOR SHALL HAVE ONSITE AT ALL TIMES SPILL PREVENTION AND CONTROL MEASURES.
13. THE CONTRACTOR SHALL PROVIDE ANY ADDITIONAL EROSION AND SEDIMENT CONTROL MEASURES (HYDROSEEDING, MULCHING OF STRAW, SAND BAGS, DIVERSION DITCHES, ETC.) DICTATED BY FIELD CONDITIONS TO PREVENT THE INTRODUCTION OF DIRT, MUD, OR DEBRIS TO EXIST PUBLIC OR PRIVATE ROADWAYS OR ONTO ADJACENT PROPERTIES DURING ANY PHASE OF CONSTRUCTION OPERATIONS. SPECIAL ATTENTION SHALL BE GIVEN TO ADDITIONAL EROSION AND SEDIMENT CONTROL MEASURES NOTED ABOVE.
14. THE CONTRACTOR IS RESPONSIBLE FOR INSPECTING AND MAINTAINING ALL EROSION AND SEDIMENT CONTROL MEASURES THROUGH THE DURATION OF THE PROJECT AND ACCORDING TO THE CONTRACT SPECIFICATIONS.
15. CONTRACTOR SHALL REGRADE AND VEGETATE DISTURBED SLOPES NEAR EXISTING CONDITION AS APPROVED BY THE OWNER'S REPRESENTATIVE. ALL FINISHED CONSTRUCTED SLOPES SHALL HAVE BIO-DEGRADABLE FIBER WATTLES INSTALLED AT THE TOE OF THE FINISHED SLOPE.
16. CONTRACTOR SHALL REMOVE ALL TEMPORARY EROSION AND SEDIMENT CONTROL FACILITIES, FENCING, AND STAGING AREA MATERIALS WHEN CONSTRUCTION IS COMPLETE. NO CONSTRUCTION DEBRIS, DEMOLITION MATERIALS, OR EXCESS EQUIPMENT SHALL BE LEFT ON SITE.
17. SEE TEMPORARY COFFERDAM AND DEWATERING SPECIFICATION AND PLAN SHEET C101 FOR DETAILS OR REQUIREMENTS FOR SITE SPECIFIC ESC MEASURES.

Disturbed Area Location	Area (sq ft)
Above OHWM	81638
Below OHWM	17812

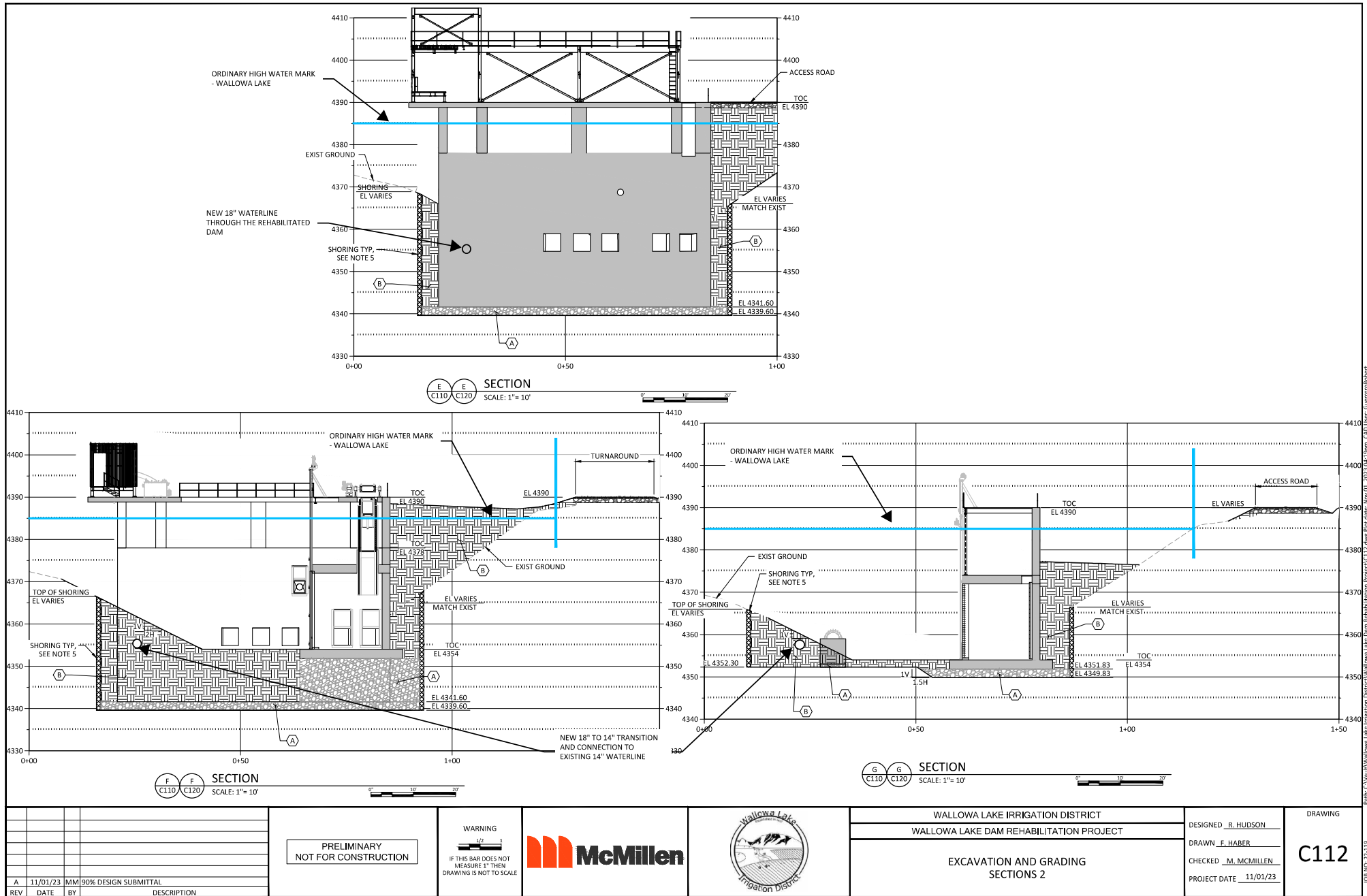


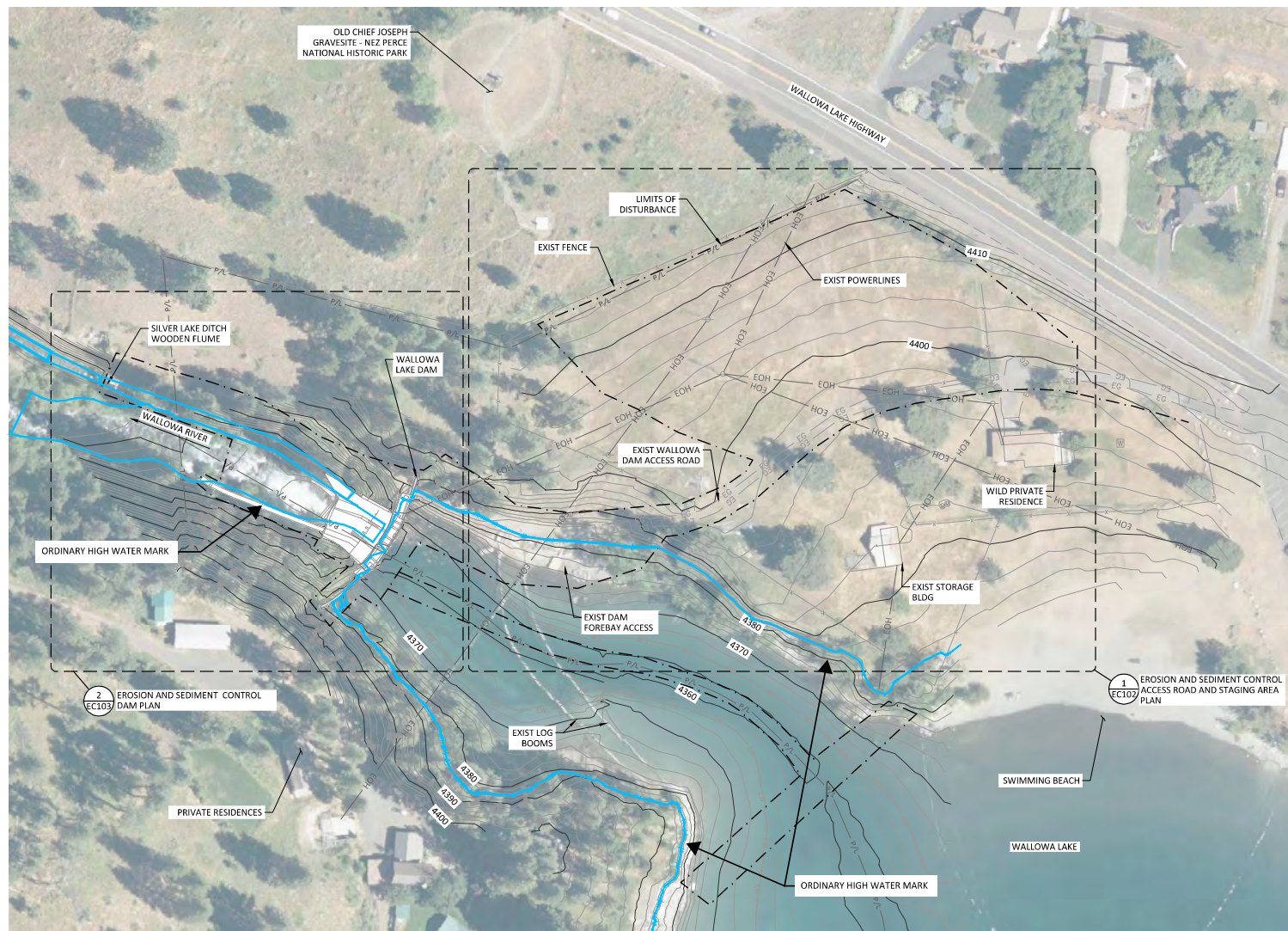
Disturbed Area Location	Area (sq ft)
Above OHWM	81638
Below OHWM	17812

<p>PRELIMINARY NOT FOR CONSTRUCTION</p>				<p>WARNING IF THIS BAR DOES NOT MEASURE 1" THEN DRAWING IS NOT TO SCALE</p>						<p>WALLOWA LAKE IRRIGATION DISTRICT WALLOWA LAKE DAM REHABILITATION PROJECT</p>		<p>DESIGNED <u>R. HUDSON</u> DRAWN <u>R. GUERRERO</u> CHECKED <u>M. McMILLEN</u> PROJECT DATE <u>11/01/23</u></p>		<p>DRAWING C100</p>	
<p>OVERALL SITE PLAN</p>															



				<div>PRELIMINARY NOT FOR CONSTRUCTION</div>		<div>WARNING</div> <div></div> <div>IF THIS BAR DOES NOT MEASURE 1" THEN DRAWING IS NOT TO SCALE</div>				<div>WALLOWA LAKE IRRIGATION DISTRICT</div> <div>WALLOWA LAKE DAM REHABILITATION PROJECT</div>		<div>DESIGNED <u>R. HUDSON</u></div> <div>DRAWN <u>F. HABER</u></div> <div>CHECKED <u>M. MCMILLEN</u></div> <div>PROJECT DATE <u>11/01/23</u></div>	<div>DRAWING</div> <div>C123</div>
A	11/01/23	MM	90% DESIGN SUBMITTAL	REV	DATE	BY	DESCRIPTION			<div>RIGHT ABUTMENT ACCESS ROAD</div> <div>PLAN AND PROFILE</div>			





EROSION AND SEDIMENT CONTROL KEY PLAN

SCALE: 1" = 50'



				<div>WARNING</div> <div><div>PRELIMINARY NOT FOR CONSTRUCTION</div></div>				<div>WARNING</div> <div><div><div>1" = 10'</div></div><div>IF THIS BAR DOES NOT MEASURE 1" THEN DRAWING IS NOT TO SCALE</div></div>				<div><div><div></div></div><div>McMillen</div></div>				<div><div><div>Wallowa Lake Irrigation District</div></div></div>				<div><div>WALLOWA LAKE IRRIGATION DISTRICT</div><div>WALLOWA LAKE DAM REHABILITATION PROJECT</div><div>EROSION AND SEDIMENT CONTROL KEY PLAN</div></div>				<div><div>DESIGNED <u>R. HUDSON</u></div><div>DRAWN <u>R. GUERRERO</u></div><div>CHECKED <u>M. MCMILLEN</u></div><div>PROJECT DATE <u>11/01/23</u></div></div>				<div><div>DRAWING</div><div>EC101</div></div>			
<div><div>A</div><div>11/01/23</div><div>MM</div><div>90% DESIGN SUBMITTAL</div></div>																															
<div><div>REV</div><div>DATE</div><div>BY</div><div>DESCRIPTION</div></div>																															

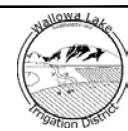


1 EROSION AND SEDIMENT CONTROL ACCESS ROAD AND STAGING AREA PLAN
 SCALE: 1"= 30'

REV	DATE	BY	DESCRIPTION
A	11/01/23	MM	90% DESIGN SUBMITTAL

PRELIMINARY
NOT FOR CONSTRUCTION

WARNING
IF THIS BAR DOES NOT
MEASURE 1" THEN
DRAWING IS NOT TO SCALE



WALLOWA LAKE IRRIGATION DISTRICT WALLOWA LAKE DAM REHABILITATION PROJECT
EROSION AND SEDIMENT CONTROL ACCESS ROAD AND STAGING AREA PLAN

DESIGNED <u>R. HUDSON</u>
DRAWN <u>R. GUERRERO</u>
CHECKED <u>M. MCMILLEN</u>
PROJECT DATE <u>11/01/23</u>

DRAWING
EC102



2 EROSION AND SEDIMENT CONTROL DAM PLAN
 SCALE: 1"= 20'

REV	DATE	BY	DESCRIPTION
A	11/01/23	MM	90% DESIGN SUBMITTAL

PRELIMINARY
NOT FOR CONSTRUCTION

WARNING
IF THIS BAR DOES NOT
MEASURE 1" THEN
DRAWING IS NOT TO SCALE

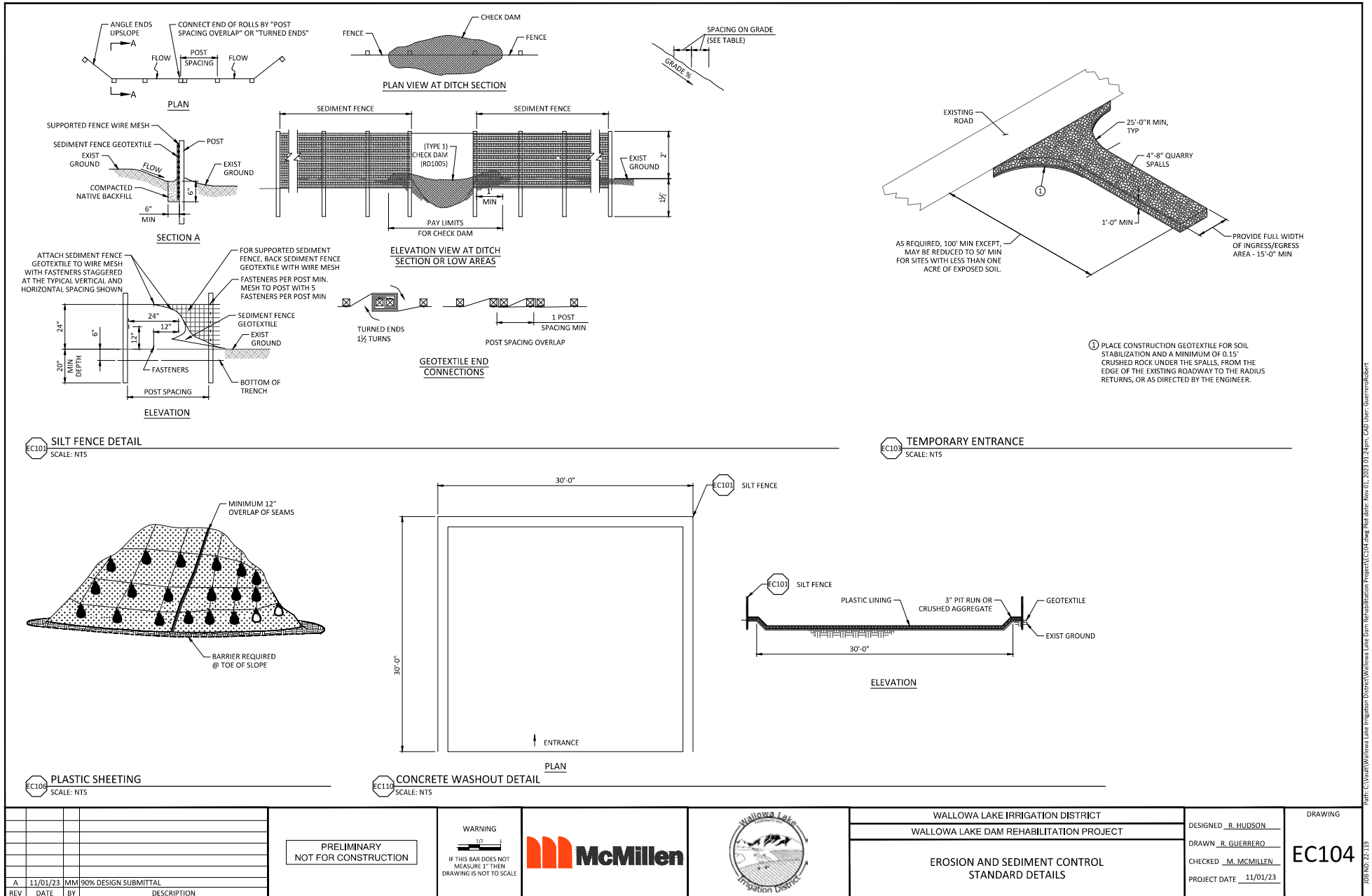


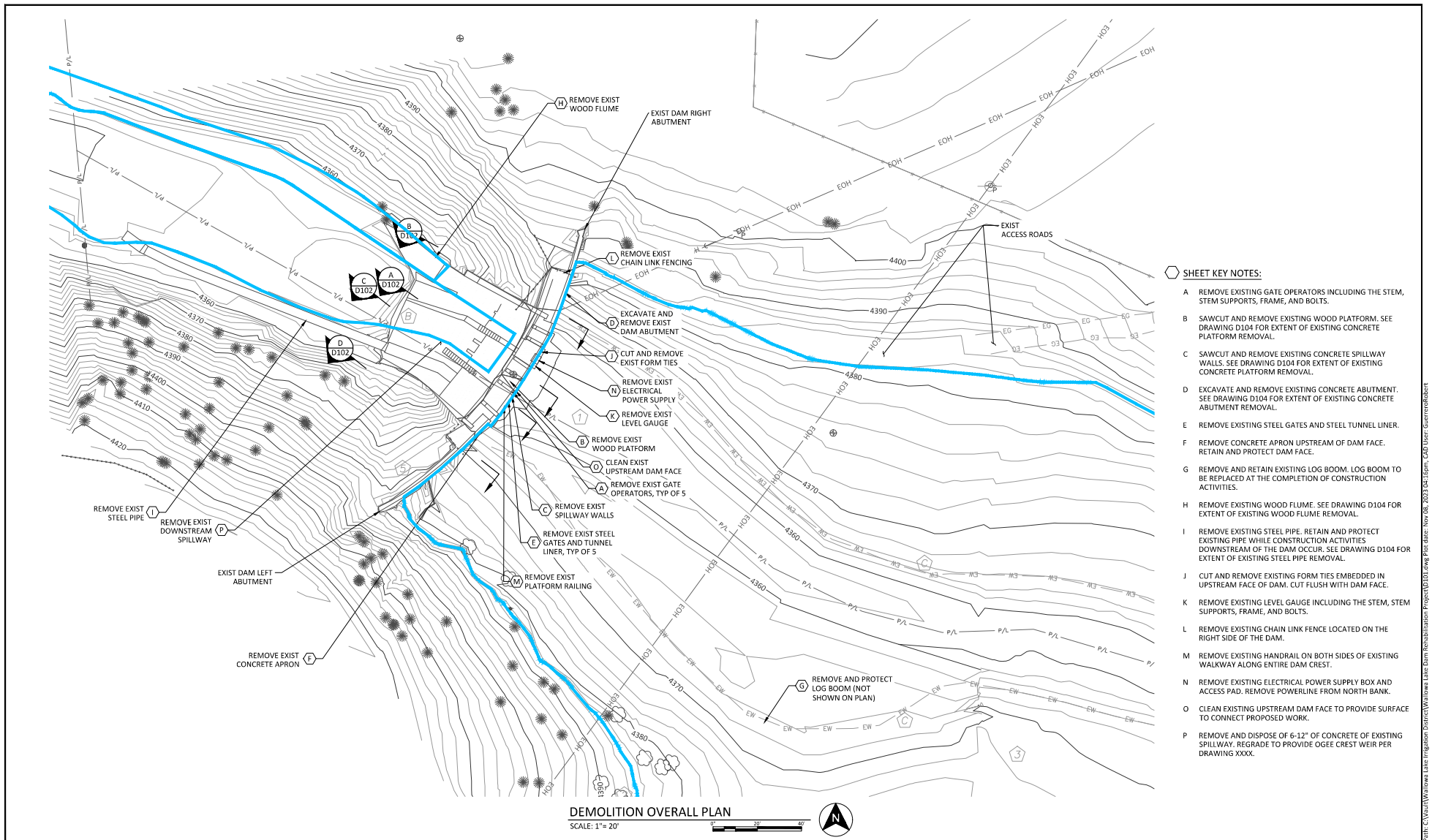
WALLOWA LAKE IRRIGATION DISTRICT WALLOWA LAKE DAM REHABILITATION PROJECT
EROSION AND SEDIMENT CONTROL DAM PLAN

DESIGNED <u>R. HUDSON</u>
DRAWN <u>R. GUERRERO</u>
CHECKED <u>M. MCMILLEN</u>
PROJECT DATE <u>11/01/23</u>

DRAWING
EC103

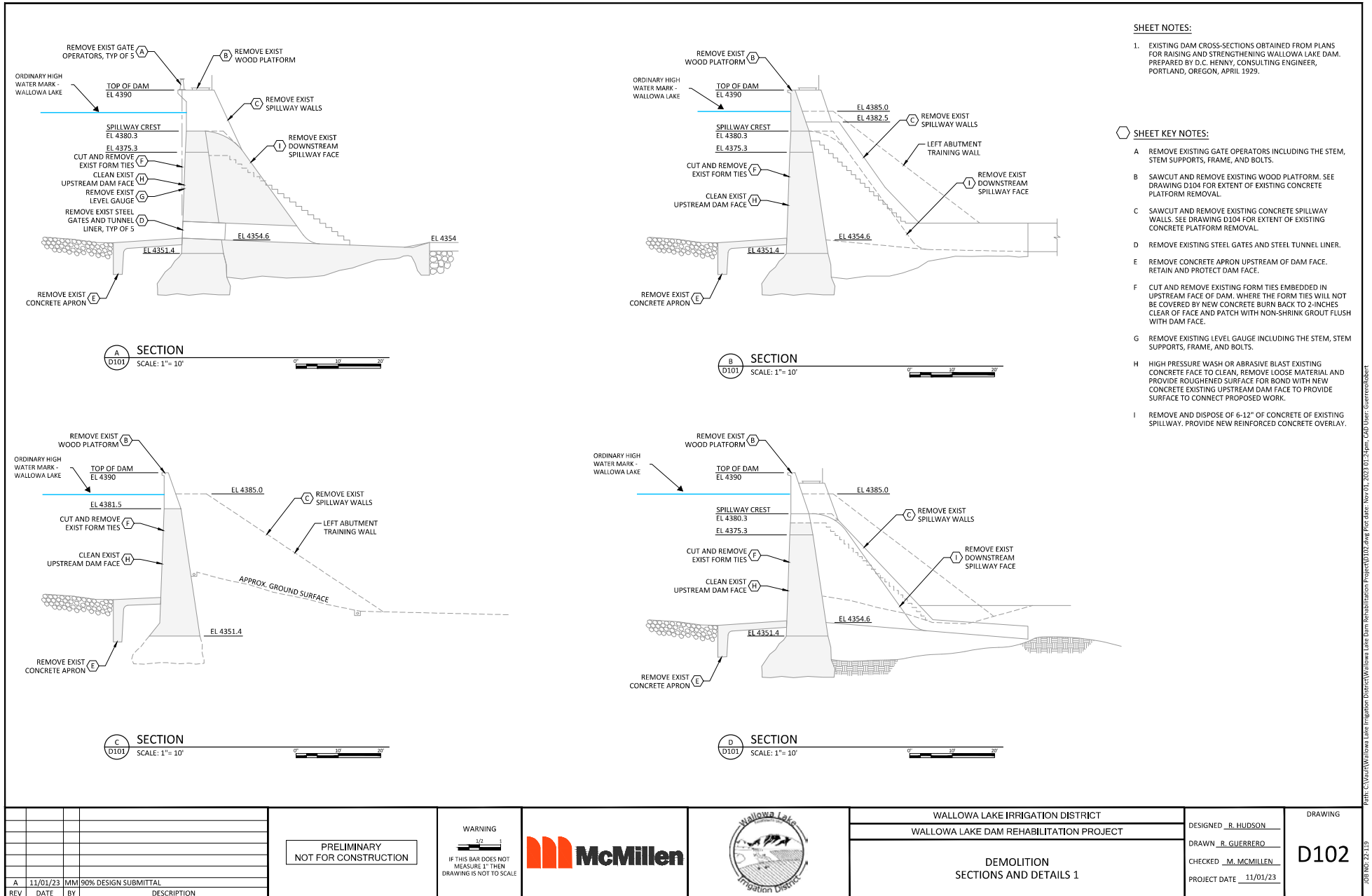
Path: C:\Users\Wallowa Lake Irrigation District\Wallowa Lake Dam Rehabilitation Project\EC103.dwg Plot date: Nov 08, 2023 03:50pm, CAD User: GuerroRobb

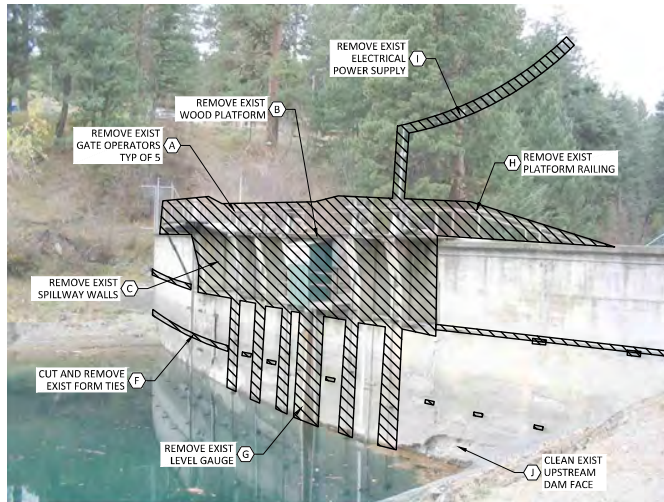




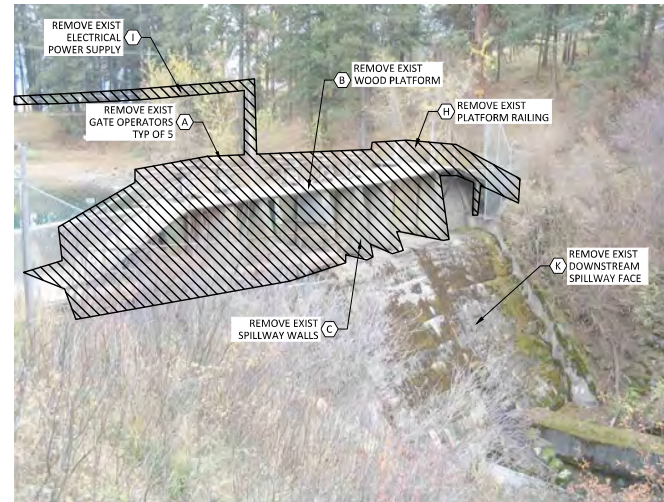
				<div>PRELIMINARY NOT FOR CONSTRUCTION</div>		<div>WARNING  IF THIS BAR DOES NOT MEASURE 1" THEN DRAWING IS NOT TO SCALE</div>			WALLOWA LAKE IRRIGATION DISTRICT		DESIGNED <u>R. HUDSON</u>	DRAWING D101			
WALLOWA LAKE DAM REHABILITATION PROJECT									DRAWN <u>R. GUERRERO</u>						
									CHECKED <u>M. McMILLLEN</u>						
									PROJECT DATE <u>11/01/23</u>						
A	11/01/23	MM	90% DESIGN SUBMITTAL									DEMOLITION OVERALL PLAN			
REV	DATE	BY	DESCRIPTION												

DBR NO. 22-219

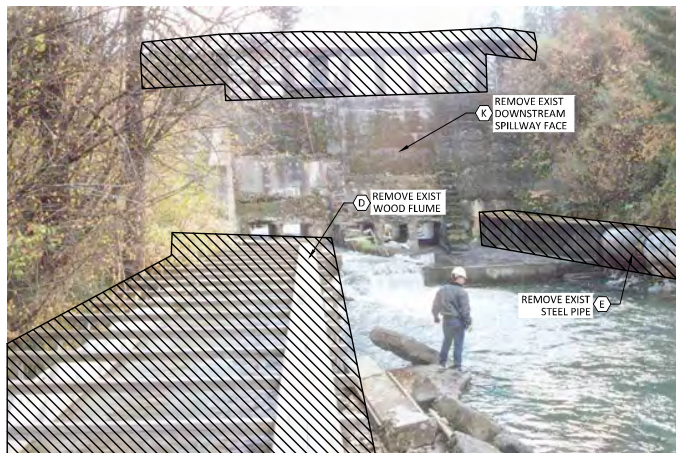




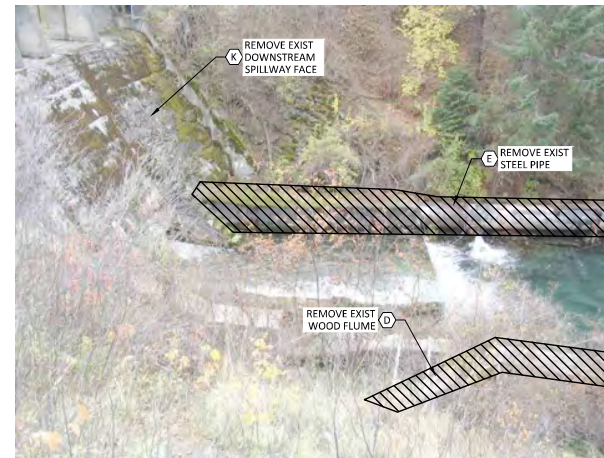
1 DEMO PHOTO 1
SCALE: NTS



2 DEMO PHOTO 2
SCALE: NTS



3 DEMO PHOTO 3
SCALE: NTS



4 DEMO PHOTO 4
SCALE: NTS

SHEET NOTES:

- ALL DEMOLISHED MATERIALS NOT SELECTED FOR SALVAGE BY THE OWNER SHALL BE DISPOSED OF AT AN APPROVED OFF-SITE LOCATION. MATERIAL HANDLING AND SALVAGE SHALL BE IN ACCORDANCE WITH THE CONTRACT SPECIFICATIONS.
- THE DEMOLITION SEQUENCE SHALL BE IN ACCORDANCE WITH THE CONTRACT SPECIFICATIONS.
- ALL EROSION AND SEDIMENT CONTROL MEASURES SHALL BE INSTALLED BY THE CONTRACTOR PRIOR TO INITIATING GROUND DISTURBING OR DEMOLITION WORK ACTIVITIES.
- THE GENERAL DAM OUTLINE AND FEATURES ARE BASED ON FIELD TOPOGRAPHIC MAPPING AND LIMITED AS-CONSTRUCTED DRAWINGS AND PHOTOGRAPHS. THE CONTRACTOR SHALL FIELD VERIFY ALL DIMENSIONS AND FEATURES AND NOTIFY THE ENGINEER OF ANY DISCREPANCIES PRIOR TO INITIATING WORK ACTIVITIES.
- SEE DRAWING G005 FOR MAPPING AND PROJECT DATUM INFORMATION

SHEET KEY NOTES:

- REMOVE EXISTING GATE OPERATORS INCLUDING THE STEM, STEM SUPPORTS, FRAME, AND BOLTS.
- SAWCUT AND REMOVE EXISTING WOOD PLATFORM.
- SAWCUT AND REMOVE EXISTING CONCRETE SPILLWAY WALLS.
- REMOVE EXISTING WOOD FLUME AS REQUIRED FOR NEW CONCRETE DIVERSION STRUCTURE.
- REMOVE EXISTING STEEL PIPE. RETAIN AND PROTECT EXISTING PIPE WHILE CONSTRUCTION ACTIVITIES DOWNSTREAM OF THE DAM OCCUR.
- CUT AND REMOVE EXISTING FORM TIES EMBEDDED IN UPSTREAM FACE OF DAM. WHERE THE FORM TIES WILL NOT BE COVERED BY NEW CONCRETE BURN BACK TO 2-INCHES CLEAR OF FACE AND PATCH WITH NON-SHRINK GROUT FLUSH WITH DAM FACE.
- REMOVE EXISTING LEVEL GAUGE INCLUDING THE STEM, STEM SUPPORTS, FRAME, AND BOLTS.
- REMOVE EXISTING HANDRAIL ON BOTH SIDES OF EXISTING WALKWAY ALONG ENTIRE DAM CREST.
- REMOVE EXISTING ELECTRICAL POWER SUPPLY BOX AND ACCESS PAD. REMOVE POWERLINE FROM NORTH BANK.
- HIGH PRESSURE WASH OR ABRASIVE BLAST EXISTING CONCRETE FACE TO CLEAN, REMOVE LOOSE MATERIAL AND PROVIDE ROUGHENED SURFACE FOR BOND WITH NEW CONCRETE EXISTING UPSTREAM DAM FACE TO PROVIDE SURFACE TO CONNECT PROPOSED WORK.
- REMOVE AND DISPOSE OF 6-12" OF CONCRETE OF EXISTING SPILLWAY. PROVIDE NEW REINFORCED CONCRETE OVERLAY.

REV	DATE	BY	DESCRIPTION
A	11/01/23	MM	90% DESIGN SUBMITTAL

PRELIMINARY
NOT FOR CONSTRUCTION

WARNING
IF THIS BAR DOES NOT
MEASURE 1" THEN
DRAWING IS NOT TO SCALE

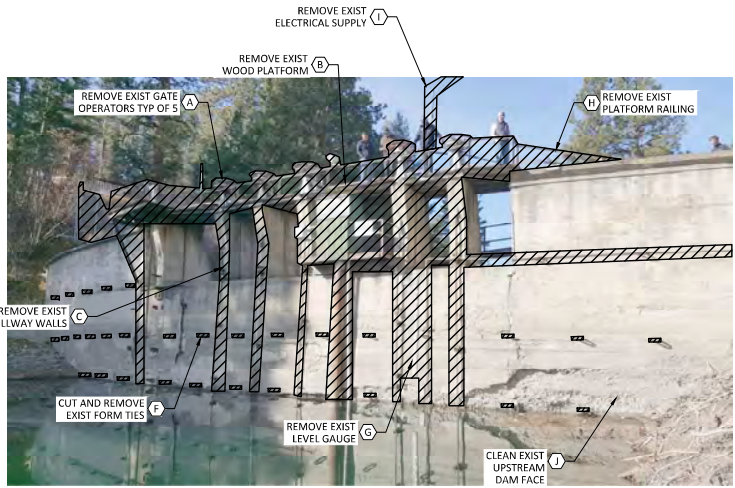


WALLOWA LAKE IRRIGATION DISTRICT
WALLOWA LAKE DAM REHABILITATION PROJECT

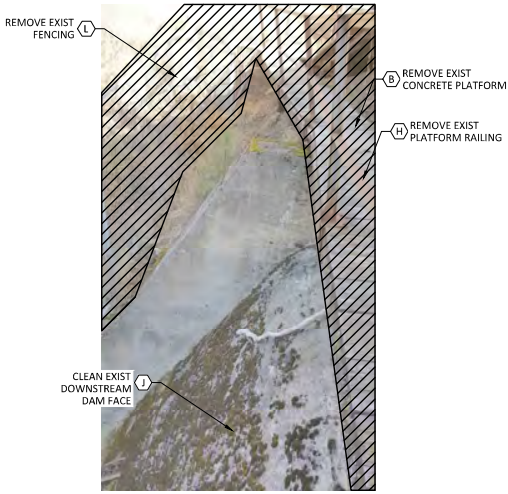
DEMOLITION
PHOTOGRAPHS 1

DESIGNED R. HUDSON
DRAWN R. GUERRERO
CHECKED M. MCMILLEN
PROJECT DATE 11/01/23

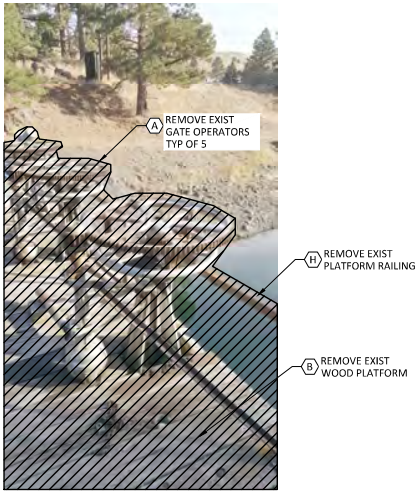
DRAWING
D104



5 DEMO PHOTO 5
SCALE: NTS



6 DEMO PHOTO 6
SCALE: NTS



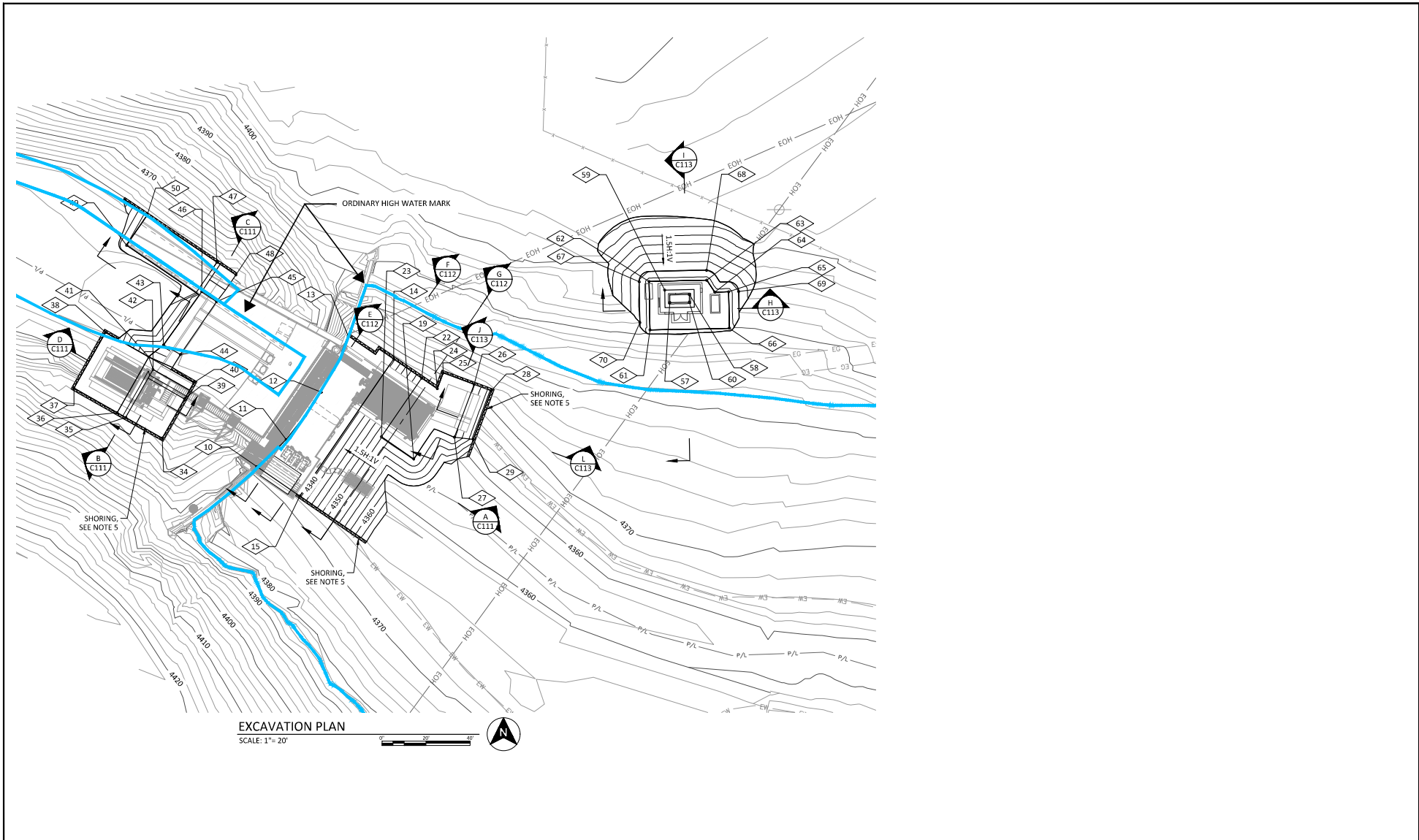
7 DEMO PHOTO 7
SCALE: NTS



8 DEMO PHOTO 8
SCALE: NTS

--	--	--	--	--	--	--	--	--	--	--	--	--	--	--	--	--	--	--	--	--	--	--	--	--	--	--	--	--	--	--	--	--	--	--	--	--	--	--	--	--	--	--	--	--	--	--	--	--	--	--	--	--	--	--	--	--	--	--	--	--	--	--	--	--	--	--	--	--	--	--	--	--	--	--	--	--	--	--	--	--	--	--	--	--	--	--	--	--	--	--	--	--	--	--	--	--	--	--	--	--	--	--	--	--	--	--	--	--	--	--	--	--	--	--	--	--	--	--	--	--	--	--	--	--	--	--	--	--	--	--	--	--	--	--	--	--	--	--	--	--	--	--	--	--	--	--	--	--	--	--	--	--	--	--	--	--	--	--	--	--	--	--	--	--	--	--	--	--	--	--	--	--	--	--	--	--	--	--	--	--	--	--	--	--	--	--	--	--	--	--	--	--	--	--	--	--	--	--	--	--	--	--	--	--	--	--	--	--	--	--	--	--	--	--	--	--	--	--	--	--	--	--	--	--	--	--	--	--	--	--	--	--	--	--	--	--	--	--	--	--	--	--	--	--	--	--	--	--	--	--	--	--	--	--	--	--	--	--	--	--	--	--	--	--	--	--	--	--	--	--	--	--	--	--	--	--	--	--	--	--	--	--	--	--	--	--	--	--	--	--	--	--	--	--	--	--	--	--	--	--	--	--	--	--	--	--	--	--	--	--	--	--	--	--	--	--	--	--	--	--	--	--	--	--	--	--	--	--	--	--	--	--	--	--	--	--	--	--	--	--	--	--	--	--	--	--	--	--	--	--	--	--	--	--	--	--	--	--	--	--	--	--	--	--	--	--	--	--	--	--	--	--	--	--	--	--	--	--	--	--	--	--	--	--	--	--	--	--	--	--	--	--	--	--	--	--	--	--	--	--	--	--	--	--	--	--	--	--	--	--	--	--	--	--	--	--	--	--	--	--	--	--	--	--	--	--	--	--	--	--	--	--	--	--	--	--	--	--	--	--	--	--	--	--	--	--	--	--	--	--	--	--	--	--	--	--	--	--	--	--	--	--	--	--	--	--	--	--	--	--	--	--	--	--	--	--	--	--	--	--	--	--	--	--	--	--	--	--	--	--	--	--	--	--	--	--	--	--	--	--	--	--	--	--	--	--	--	--	--	--	--	--	--	--	--	--	--	--	--	--	--	--	--	--	--	--	--	--	--	--	--	--	--	--	--	--	--	--	--	--	--	--	--	--	--	--	--	--	--	--	--	--	--	--	--	--	--	--	--	--	--	--	--	--	--	--	--	--	--	--	--	--	--	--	--	--	--	--	--	--	--	--	--	--	--	--	--	--	--	--	--	--	--	--	--	--	--	--	--	--	--	--	--	--	--	--	--	--	--	--	--	--	--	--	--	--	--	--	--	--	--	--	--	--	--	--	--	--	--	--	--	--	--	--	--	--	--	--	--	--	--	--	--	--	--	--	--	--	--	--	--	--	--	--	--	--	--	--	--	--	--	--	--	--	--	--	--	--	--	--	--	--	--	--	--	--	--	--	--	--	--	--	--	--	--	--	--	--	--	--	--	--	--	--	--	--	--	--	--	--	--	--	--	--	--	--	--	--	--	--	--	--	--	--	--	--	--	--	--	--	--	--	--	--	--	--	--	--	--	--	--	--	--	--	--	--	--	--	--	--	--	--	--	--	--	--	--	--	--	--	--	--	--	--	--	--	--	--	--	--	--	--	--	--	--	--	--	--	--	--	--	--	--	--	--	--	--	--	--	--	--	--	--	--	--	--	--	--	--	--	--	--	--	--	--	--	--	--	--	--	--	--	--	--	--	--	--	--	--	--	--	--	--	--	--	--	--	--	--	--	--	--	--	--	--	--	--	--	--	--	--	--	--	--	--	--	--	--	--	--	--	--	--	--	--	--	--	--	--	--	--	--	--	--	--	--	--	--	--	--	--	--	--	--	--	--	--	--	--	--	--	--	--	--	--	--	--	--	--	--	--	--	--	--	--	--	--	--	--	--	--	--	--	--	--	--	--	--	--	--	--	--	--	--	--	--	--	--	--	--	--	--	--	--	--	--	--	--	--	--	--	--	--	--	--	--	--	--	--	--	--	--	--	--	--	--	--	--	--	--	--	--	--	--	--	--	--	--	--	--	--	--	--	--	--	--	--	--	--	--	--	--	--	--	--	--	--	--	--	--	--	--	--	--	--	--	--	--	--	--	--	--	--	--	--	--	--	--	--	--	--	--	--	--	--	--	--	--	--	--	--	--	--	--	--	--	--	--	--	--	--	--	--	--	--	--	--	--	--	--	--	--	--	--	--	--	--	--	--	--	--	--	--	--	--	--	--	--	--	--	--	--	--	--	--	--	--	--	--	--	--	--	--	--	--	--	--	--	--	--	--	--	--	--	--	--	--	--	--	--	--	--	--	--	--	--	--	--	--	--	--	--	--	--	--	--	--	--	--	--	--	--	--	--	--	--	--	--	--	--	--	--	--	--	--	--	--	--	--	--	--	--	--	--	--	--	--	--	--	--	--	--	--	--	--	--	--	--	--	--	--	--	--	--	--	--	--	--	--	--	--	--	--	--	--	--	--	--	--	--	--	--	--	--	--	--	--	--	--	--	--	--	--	--	--	--	--	--	--	--	--	--	--	--	--	--	--	--	--	--	--	--	--	--	--	--	--	--	--	--	--	--	--	--	--	--	--	--	--	--	--	--	--	--	--	--	--	--	--	--	--	--	--	--	--	--	--	--	--	--	--	--	--	--	--	--	--	--	--	--	--	--	--	--	--	--	--	--	--	--	--	--	--	--	--	--	--	--	--	--	--	--	--	--	--	--	--	--	--	--	--	--	--	--	--	--	--	--	--	--	--	--	--	--	--	--	--	--	--	--	--	--	--	--	--	--	--	--	--	--	--	--	--	--	--	--	--	--	--	--	--	--	--	--	--	--	--	--	--	--	--	--	--	--	--	--	--	--	--	--	--	--	--	--	--	--	--	--	--	--	--	--	--	--	--	--	--	--	--	--	--	--	--	--	--	--	--	--	--	--	--	--	--	--	--	--	--	--	--	--	--	--	--	--	--	--	--	--	--	--	--	--	--	--	--	--	--	--	--	--	--	--	--	--	--	--	--	--	--	--	--	--	--	--	--	--	--	--	--	--	--	--	--	--	--	--	--	--	--	--	--	--	--

Path: C:\Vault\Wallowa Lake Irrigation District\Wallowa Lake Dam Rehabilitation Project\0105.dwg Plot date: Nov 01, 2023 01:24pm CAD User: guerrero@idit



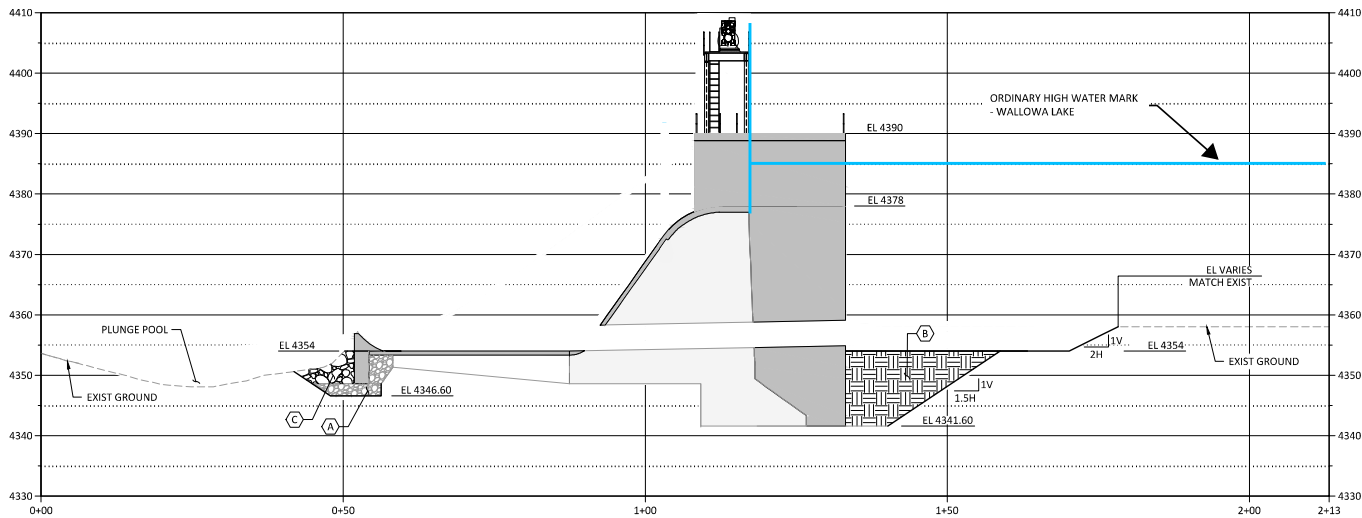
				<p>PRELIMINARY NOT FOR CONSTRUCTION</p>	<p>WARNING IF THIS BAR DOES NOT MEASURE 1" THEN DRAWING IS NOT TO SCALE</p>			<p>WALLOWA LAKE IRRIGATION DISTRICT WALLOWA LAKE DAM REHABILITATION PROJECT</p>	<p>DESIGNED <u>R. HUDSON</u> DRAWN <u>F. HABER</u> CHECKED <u>M. MCMILLEN</u> PROJECT DATE <u>11/01/23</u></p>	<p>DRAWING C110</p>
<p>A 11/01/23 MM 90% DESIGN SUBMITTAL</p>	REV	DATE	BY					<p>EXCAVATION PLAN</p>		

SHEET NOTES:

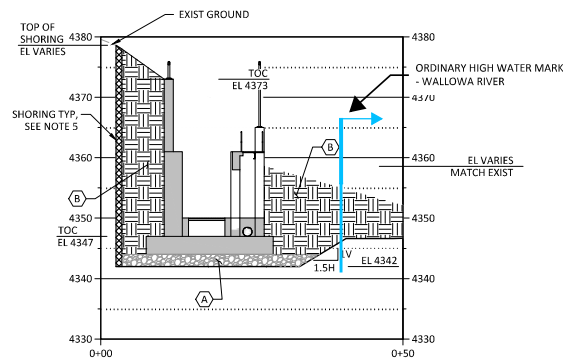
1. TOPOGRAPHIC MAPPING PREPARED BY BAGETT, GRIFFIN AND BLACKMAN. SEE DRAWING 0005 FOR SURVEY CONTROL.
2. SEE EROSION CONTROL DRAWINGS FOR EROSION AND SEDIMENT CONTROL MEASURES.
3. EXCAVATION LIMITS ARE APPROXIMATE AND MAY CHANGE BASED ON FIELD CONDITIONS OR CONTRACTORS MEANS AND METHODS.
4. SEE STRUCTURAL SHEETS FOR ADDITIONAL STRUCTURE DETAILS.
5. SHORING SYSTEM TO BE DESIGNED BY CONTRACTOR.
6. WALLOWA RIVER OHWM NOT SHOWN ON SECTION D DUE TO IT BEING OUTSIDE THE OHWM.

SHEET KEY NOTES:

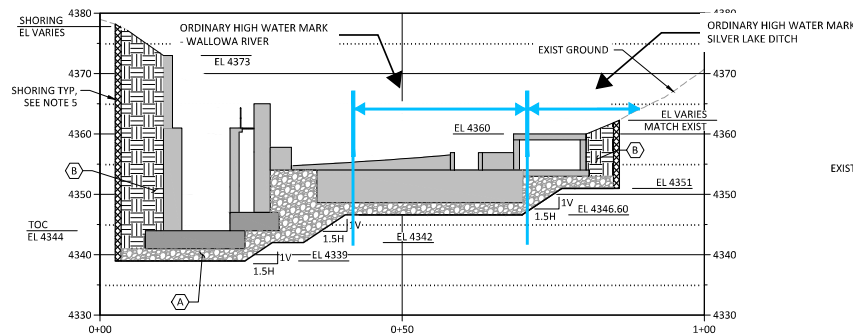
- A PLACE AND COMPACT STRUCTURAL FILL MATERIAL.
- B PLACE AND COMPACT GENERAL CIVIL FILL MATERIAL.
- C PLACE AND COMPACT RIPRAP FILL MATERIAL.



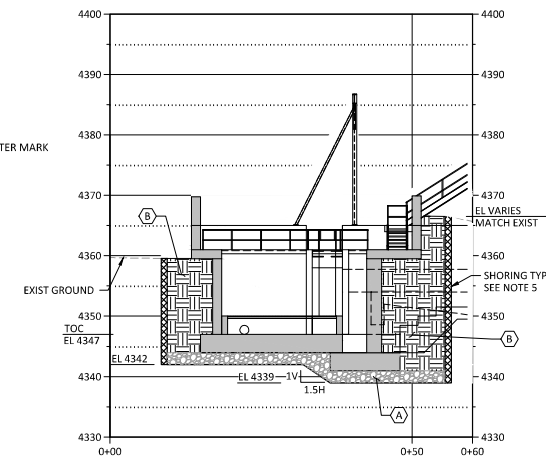
SECTION A-A (C110 to C120) SCALE: 1"= 10'



SECTION B-B (C110 to C120) SCALE: 1"= 10'



SECTION C-C (C110 to C120) SCALE: 1"= 10'



SECTION D-D (C110 to C120) SCALE: 1"= 10'

REV	DATE	BY	DESCRIPTION
A	11/01/23	MM	90% DESIGN SUBMITTAL

PRELIMINARY
NOT FOR CONSTRUCTION

WARNING
IF THIS BAR DOES NOT
MEASURE 1" THEN
DRAWING IS NOT TO SCALE

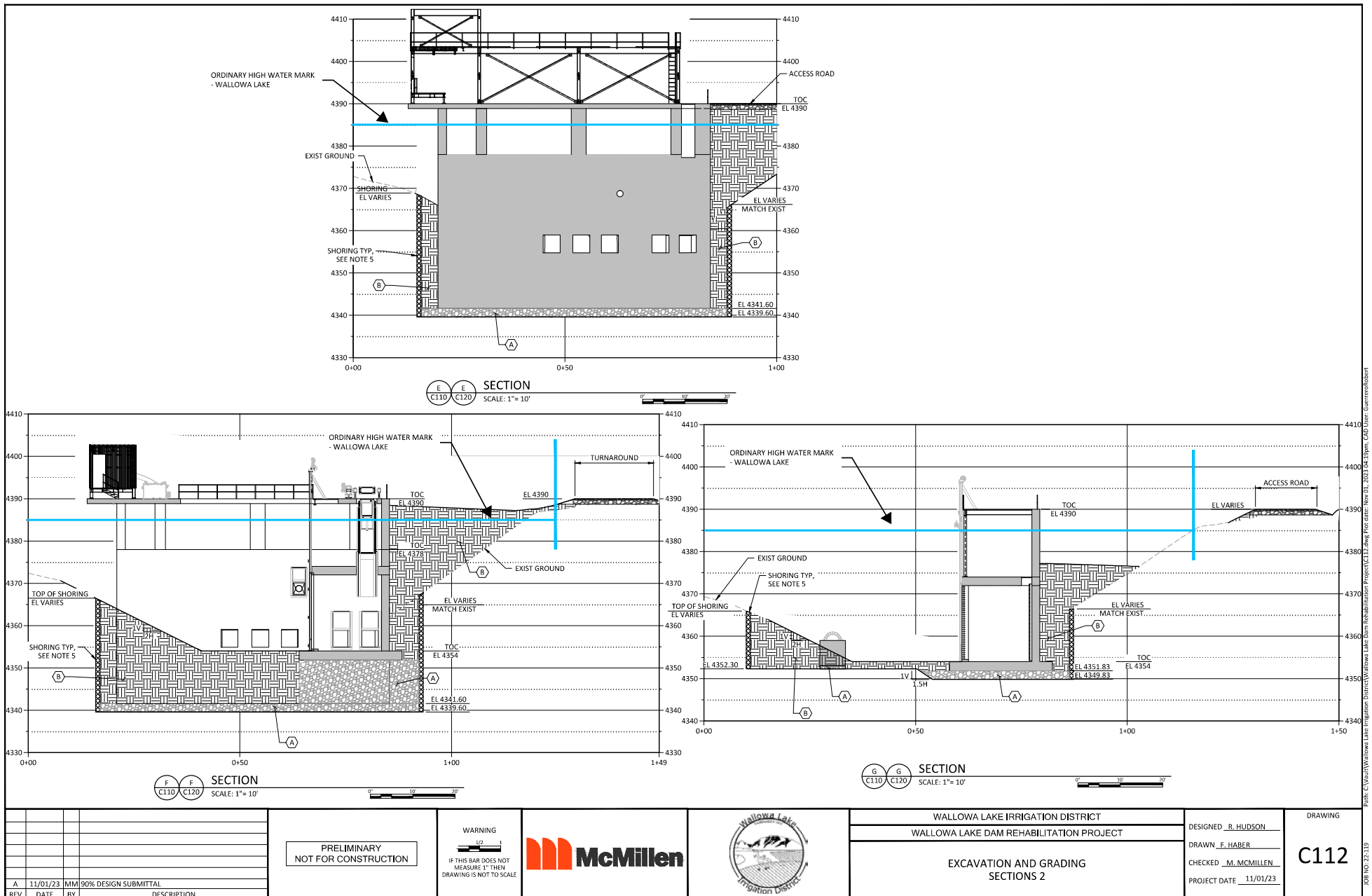


WALLOWA LAKE IRRIGATION DISTRICT
WALLOWA LAKE DAM REHABILITATION PROJECT

EXCAVATION AND GRADING
SECTIONS 1

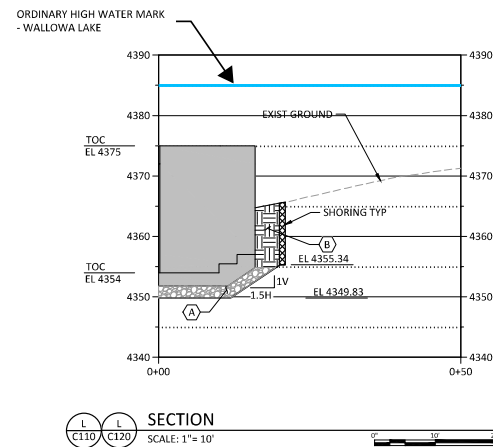
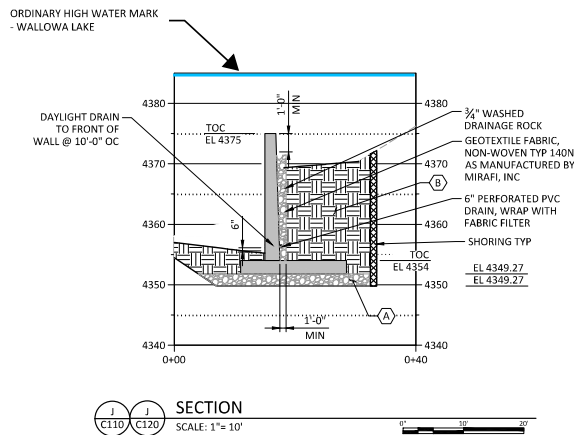
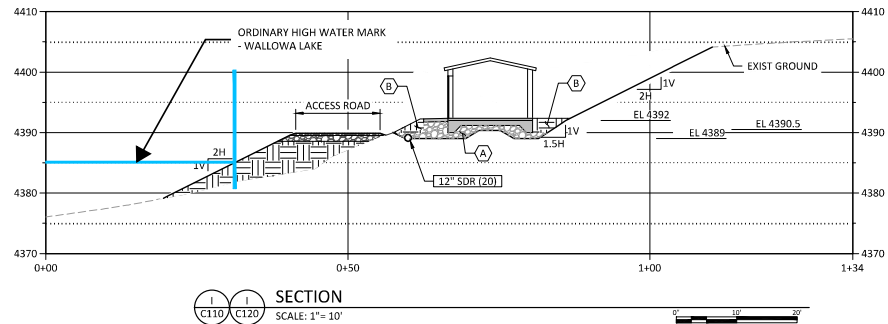
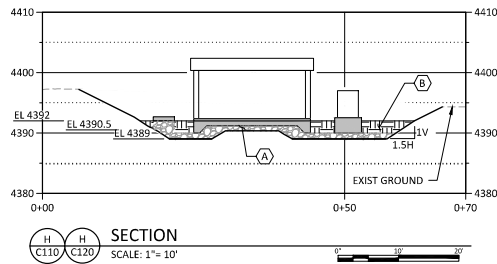
DESIGNED R. HUDSON
DRAWN F. HABER
CHECKED M. McMILLEN
PROJECT DATE 11/01/23

DRAWING
C111



NOTES:

1. WALLOWA LAKE OHWM NOT SHOWN ON SECTION H DUE TO IT BEING OUTSIDE THE OHWM.



REV	DATE	BY	DESCRIPTION
A	11/01/23	MM	90% DESIGN SUBMITTAL

PRELIMINARY
NOT FOR CONSTRUCTION

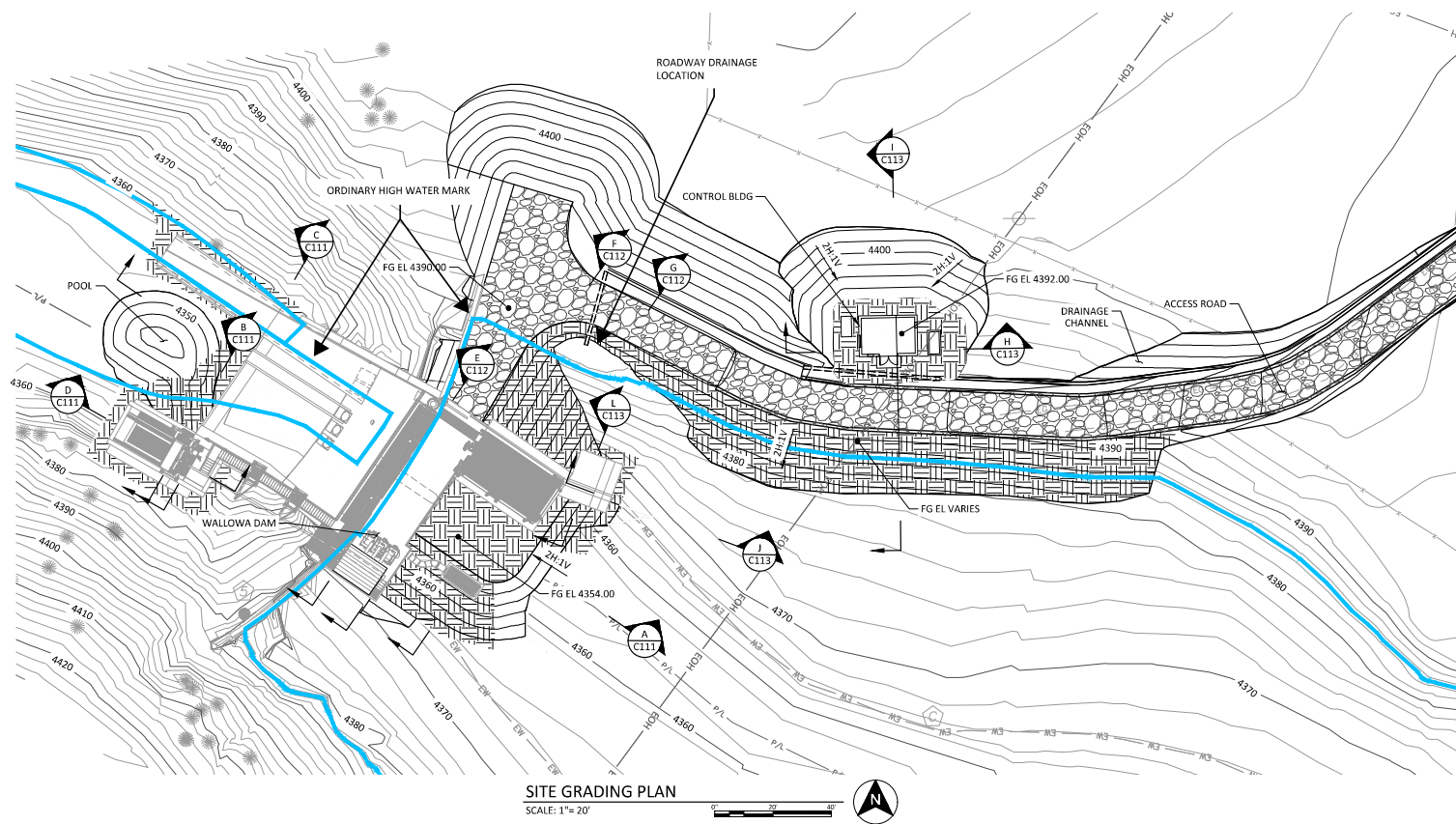
WARNING
IF THIS BAR DOES NOT
MEASURE 1" THEN
DRAWING IS NOT TO SCALE



WALLOWA LAKE IRRIGATION DISTRICT
WALLOWA LAKE DAM REHABILITATION PROJECT
EXCAVATION AND GRADING
SECTIONS 3

DESIGNED R. HUDSON
DRAWN F. HABER
CHECKED M. MCMILLEN
PROJECT DATE 11/01/23

DRAWING
C113



				<div>PRELIMINARY NOT FOR CONSTRUCTION</div>		<div>WARNING  IF THIS BAR DOES NOT MEASURE 1" THEN DRAWING IS NOT TO SCALE</div>						<div>WALLOWA LAKE IRRIGATION DISTRICT</div> <div>WALLOWA LAKE DAM REHABILITATION PROJECT</div> <div>SITE GRADING PLAN</div>		<div>DESIGNED <u>R. HUDSON</u></div> <div>DRAWN <u>R. GUERRERO</u></div> <div>CHECKED <u>M. MCMILLEN</u></div> <div>PROJECT DATE <u>11/01/23</u></div>		<div>DRAWING</div> <div>C120</div>	
A	11/01/23	MM	90% DESIGN SUBMITTAL														
REV	DATE	BY	DESCRIPTION														